

AUSTRALIA'S
SOUTH WEST
HOLIDAY PLANNER 2026

AUSTRALIA'S

**SOUTH
WEST** DREAM
DEEPER



WESTERN
AUSTRALIA
WALKING ON A DREAM

AUSTRALIA'S SOUTH WEST

DREAM
DEEPER

- BIBBULMUN TRACK
- CAPE TO CAPE TRACK
- MUNDA BIDDI TRAIL
- NATIONAL PARK

INDIAN OCEAN



Map information is not comprehensive and is for illustration purposes only.

PLAN YOUR ROAD TRIP

DISTANCES BETWEEN TOWNS IN KILOMETRES AND HOURS

Tip: Take a break from driving every 2 hours to stay alert and avoid driving at dawn and dusk, when wildlife is more active on roads.

	Perth	Bunbury	Busselton	Margaret River	Augusta	Nannup	Bridgetown	Manjimup	Pemberton	Walpole	Denmark	Albany	Mount Barker	Kojonup	Bremer Bay
Perth	—	166km 2hrs	222km 2hrs 40mins	262km 3hrs	315km 3hrs 40mins	267km 3hrs 10mins	253km 2hrs 50mins	293km 3hrs 30mins	323km 3hrs 40mins	418km 5hrs	421km 4hrs 40mins	413km 4hrs 30mins	363km 4hrs 5mins	260km 3hrs	503km 5hrs 30mins
Bunbury	166km 2hrs	—	52km 40mins	101km 1hr 15mins	145km 1hr 40mins	97km 1hr 10mins	95km 1hr 15mins	132km 1hr 35mins	162km 2hrs	256km 3hrs 5mins	331km 3hrs 40mins	348km 3hrs 40mins	289km 3hrs 10mins	197km 2hrs 15mins	431km 5hrs
Busselton	222km 2hrs 40mins	52km 40mins	—	50km 40mins	90km 1hr 10mins	60km 40mins	107km 1hr 15mins	131km 1hr 35mins	138km 1hr 40mins	243km 3hrs	312km 3hrs 30mins	332km 3hrs 40mins	293km 3hrs 15mins	217km 2hrs 30mins	464km 5hrs
Margaret River	262km 3hrs	101km 1hr 15mins	50km 40mins	—	91km 30mins	70km 50mins	150km 1hr 30mins	130km 1hr 35mins	139km 1hr 40mins	253km 3hrs	325km 3hrs 45mins	379km 3hrs 50mins	292km 3hrs 15mins	267km 2hrs 45mins	478km 5hrs 15mins
Augusta	315km 3hrs 40mins	145km 1hr 40mins	91km 1hr 10mins	40km 30mins	—	87km 1hr	133km 1hr 35mins	129km 1hr 35mins	124km 1hr 30mins	247km 2hrs 55mins	309km 3hrs 35mins	355km 3hrs 55mins	292km 3hrs 15mins	240km 2hrs 50mins	490km 5hrs 20mins
Nannup	267km 3hrs 10mins	97km 1hr 10mins	60km 40mins	70km 50mins	87km 1hr	—	46km 40mins	53km 45mins	78km 1hr	183km 2hrs 10mins	252km 2hrs 50mins	272km 3hrs	222km 2hrs 30mins	153km 1hr 50mins	408km 4hrs 25mins
Bridgetown	253km 2hrs 50mins	95km 1hr 15mins	107km 1hr 15mins	150km 1hr 30mins	133km 1hr 35mins	46km 45mins	—	37km 30mins	68km 50mins	163km 2hrs 5mins	221km 2hrs 30mins	274km 2hrs 45mins	192km 2hrs 5mins	117km 1hr 40mins	355km 3hrs 55mins
Manjimup	293km 3hrs 30mins	132km 1hr 35mins	131km 1hr 35mins	130km 1hr 35mins	129km 1hr 35mins	53km 45mins	37km 30mins	—	31km 20mins	119km 1hr 20mins	184km 2hrs 10mins	213km 2hrs 15mins	161km 1hr 40mins	145km 1hr 40mins	331km 3hrs 30mins
Pemberton	323km 3hrs 40mins	162km 2hrs	138km 1hr 40mins	139km 1hr 40mins	124km 1hr 30mins	78km 1hr	68km 50mins	31km 20mins	—	126km 2hrs 20mins	186km 2hrs 40mins	239km 2hrs 40mins	182km 2hrs	184km 2hrs 10mins	367km 4hrs
Walpole	418km 5hrs	256km 3hrs 5mins	236km 3hrs	253km 3hrs	249km 2hrs 55mins	184km 2hrs 10mins	163km 1hr 55mins	119km 1hr 20mins	126km 1hr 30mins	—	74km 1hr	127km 1hr 35mins	122km 1hr 30mins	229km 2hrs 35mins	300km 3hrs 20mins
Denmark	421km 4hrs 40mins	331km 3hrs 40mins	312km 3hrs 30mins	325km 3hrs 45mins	309km 3hrs 35mins	252km 2hrs 50mins	221km 2hrs 30mins	184km 2hrs 10mins	186km 2hrs 20mins	74km 1hrs	—	53km 45mins	57km 40mins	157km 1hr 40mins	229km 3hrs 20mins
Albany	413km 4hrs 30mins	348km 3hrs 40mins	332km 3hrs 40mins	379km 3hrs 50mins	355km 3hrs 55mins	272km 3hrs	274km 2hrs 45mins	213km 2hrs 15mins	239km 2hrs 40mins	127km 1hr 35mins	53km 45mins	—	53km 40mins	155km 1hr 40mins	181km 1hr 55mins
Mount Barker	363km 4hrs 5mins	289km 3hrs 10mins	293km 3hrs 15mins	292km 3hrs 15mins	292km 3hrs 15mins	222km 2hrs 30mins	192km 2hrs 5mins	161km 1hr 40mins	182km 2hrs	122km 1hr 30mins	57km 40mins	53km 40mins	—	104km 1hr 5mins	172km 1hr 55mins
Kojonup	260km 3hrs	197km 2hrs 15mins	217km 2hrs 30mins	267km 2hrs 45mins	240km 2hrs 50mins	153km 1hr 50mins	117km 1hr 40mins	145km 1hr 40mins	184km 2hrs 10mins	229km 2hrs 35mins	157km 1hr 40mins	155km 1hr 40mins	104km 1hr 5mins	—	248km 2hrs 40mins
Bremer Bay	503km 5hrs 30mins	431km 5hrs	464km 5hrs	478km 5hrs 15mins	490km 5hrs 20mins	408km 4hrs 25mins	355km 3hrs 55mins	331km 3hrs 30mins	367km 4hrs	299km 3hrs 20mins	229km 3hrs 20mins	181km 1hr 55mins	248km 2hrs 40mins	248km 2hrs 40mins	—



CONTENTS

WANJU (WELCOME)	6
SOUTH WEST ABORIGINAL SIX SEASONS	7
BUNBURY GEOGRAPHE	8
MARGARET RIVER REGION	14
SOUTHERN FORESTS & VALLEYS	28
GREAT SOUTHERN	36
2026 EVENTS	44
ADVENTURE	46
CULTURE AND HERITAGE	50
NATURE AND WILDLIFE	52
WELLNESS	56
WINE, FOOD AND PRODUCE	58
ACCOMMODATION	62
PET FRIENDLY	64
ACCESSIBILITY AND INCLUSIVITY	66
SUSTAINABILITY	67
PLAN YOUR TRIP	68
START DREAMING	70

 @australias_southwest

 @AustraliasSouthWest

 @australias_southwest

 @AustraliasSouthWest

 @australias_southwest

**DON'T FORGET TO SHARE
YOUR SOUTH WEST GETAWAY!**
#AustraliasSouthWest

ABOUT THIS BROCHURE

This brochure is produced annually by Australia's South West, a not-for-profit regional tourism organisation proudly supported by Tourism Western Australia. Australia's South West – including its agents, officers and contractors – has made every endeavour to ensure the details appearing in this publication are correct at the time of publishing, accepts no responsibility for any inaccuracy or misdescription whether by inclusion or omission, nor does the publisher accept any responsibility for subsequent change or withdrawal of prices, details or services shown, all of which are subject to alteration without notice.

SUSTAINABLE TOURISM ACCREDITATION



When you holiday in WA, look for Sustainable Tourism Accredited Businesses — your guarantee of exceptional experiences wherever you go. From hotels and tours to attractions and services, these quality-assured operators deliver reliable service you can trust. They're committed to outstanding customer care and sound sustainability practices.

PHOTOGRAPHY CREDITS

The 2026 Holiday Planner has four different front covers with credit to Kathleen Thompson (Dolphin Discovery Centre in Bunbury Geographe), Robyn Streczynski (Gannet Rock in Margaret River Region), Olivia Trinkla (Pemberton Pool in the Southern Forests & Valleys), and Scott Slawinski/Base Imagery (The Gap in the Great Southern).

The photos inside this planner have kindly been provided by:

Annabel Owen, Aravina Estate, Base Imagery, Bianca Turri, Caleb Davenport, CJ Maddock, Coasting Outback, Dolphin Discovery Centre, Elisa Herdman, Evan Ledger, FLOW Mountain Biking, Frances Andrijich, Heyscape, Highland View Farm, Jarrad Seng, Jenny Feast Photography, Kirby Spencer, Oisín Cooke, Roady Australia, Russell Ord Photography, Sean Hsu, Sean Scott, SoCo Studios, Tess Moone, Tim Campbell, Tourist The Bus, Ute Coleman, and Virat Shah.

DREAM DEEPER

In Australia's South West, it's not just about fleeting moments – it's about seeking deeper connections, discoveries, and transformation.

Walk atop ancient forests of towering Karri and Jarrah trees where nature shares its age-old stories with a whisper. Hike rugged cliffs, where oceans meet – a spectacle that takes your breath away. Pure forest air fuelling each step of your adventure.

With grapes caressed by ocean breezes yielding fine wines, a tale of enchantment within each sip. Relish in produce plucked from fertile soils, curated and paired in sensory feasts. Soak up moments of powerful stillness in ancient limestone caves.

Dive into crystal-clear oceans, lakes, and rivers. Be at one with wild nature, with playful dolphins and graceful humpback whales, riding the perfect wave. Where off-track foraging through undergrowth gifts earth's treasures.

Beaches so vast, trails untouched, tracks unbeaten.

Where those who seek diverse and transformative experiences find them in abundance.

Published by Vanguard Publishing
Printed by Vanguard Print
Distributed by Vanguard Distribution

Part of Vanguard Media Group
26 John Street, Northbridge WA 6003
vanguardmediagroup.com.au

Advertising: Natalie du Preez, 0426 752 352
natalie@vanguardpublishing.com.au

Designer: Karen Morton

📍 TWO PEOPLE'S BAY NATURE RESERVE, ALBANY

DREAM DEEPER | 5

WANJU (WELCOME)

Australia's South West is a region abundant in ancient culture, magical adventures, incredible wildlife, and picturesque landscapes, stretching from Harvey (Korijekup) in the north through to Bremer Bay in the south.

It is home to one of the world's oldest continuing cultures, the Noongar Aboriginal people, who celebrate their profound connection to Boodja (Country) through unique stories, language, ceremonies, art, song, and dance, which have been passed down for more than 50,000 years.

Here, trails lead to unseen places among towering forests and along windswept coastlines, whale song echoes across turquoise bays, and the scent of saltbush and peppermint drift on the breeze.

Country calls us to step in rhythm with it. To slow down, listen, and connect. Let ourselves wander, wonder, and dream a little deeper.

Welcome to Australia's South West, where we leave the everyday far behind.

ACKNOWLEDGEMENT OF COUNTRY

We acknowledge the Traditional Custodians of the South West, the Noongar people, and their enduring connection to, and care for, Boodja. We recognise the Pinjarup, Wiilman, Wadandi, Pibelman, Kaneang, Menang, and Koreng Aboriginal Communities, and invite visitors to respect and care for this ancient land and culture, contributing to its preservation for future generations.

Visitors are encouraged to learn about Country by immersing themselves in first-nation culture up close. Experience the thrill of a live didgeridoo performance, listen to Dreaming stories, taste bush-tucker, discover traditional bush medicine, or join a tour led by local Noongar guides.

Just like the gentle breezes that blow off the pristine bays of the South West, we ask that you pass through Country without changing it.



SOUTH WEST ABORIGINAL SIX SEASONS

The first inhabitants of Australia's South West were the Noongar Aboriginal people, who have had a continuing connection to the land, waters and communities for more than 50,000 years. Conservationists by nature, they were semi-nomadic hunter gatherers who followed a six-season calendar, still used by Noongar people today. The six seasons - Birak, Bunuru, Djeran, Makuru, Djilba, and Kambarang - represent the seasonal changes we see across the South West annually.



BIRAK

December - January

Known as the season of fire and the young, Birak is very hot and dry and was known as the time to burn the scrub so as to encourage new shoots to grow. Expect warm days, with soulful afternoon sea breezes bringing relief along the coastline. Long daylight hours make for perfect roadtrip conditions, while newborn wildlife frolic about, from joeys to orca. And in the night time, there's nothing but an endless canopy of stars.



BUNURU

February - March

Long days and short nights signify the start of Bunuru, the hottest of the six seasons. This was traditionally - and continues to be - the best time to live and fish by the coast, rivers, and estuaries. Wispy coastal afternoons, the croak of frogs in creeks, and the sound of cicadas abound. Little rain falls, with hot easterly winds blowing across the land. Be on the lookout for the white flowers of the Jarrah, Marri, and gum trees.



DJERAN

April - May

Djeran is when the hot weather gives way to pleasant days, cooler nights, and dewy mornings. The leaves begin to fall, red and gold colours envelop the land, and the wind begins to swing southerly making it more intense and brisk. Grab your jacket for your hikes and smell the rain in the soil. During your ventures you'll find Ngari (salmon) swimming along the beaches and Jeeriji (zamia) fronds unfurling.



MAKURU

June - July

Makuru is the coldest season on the calendar, when the region is splashed with rainstorms and cloaked in long nights. As the waterways fill, grazing would become easier for animals and hunting of Yongka (kangaroo), Wetj (emu), Kaarda (goanna), Koomal (possum), and Kwenda (bandicoot) traditionally began. Hearty comfort food and red wine is on the menu throughout towns. Blue wildflowers emerge and the whales return to the coastline, headed northward on their great migration.



DJILBA

August - September

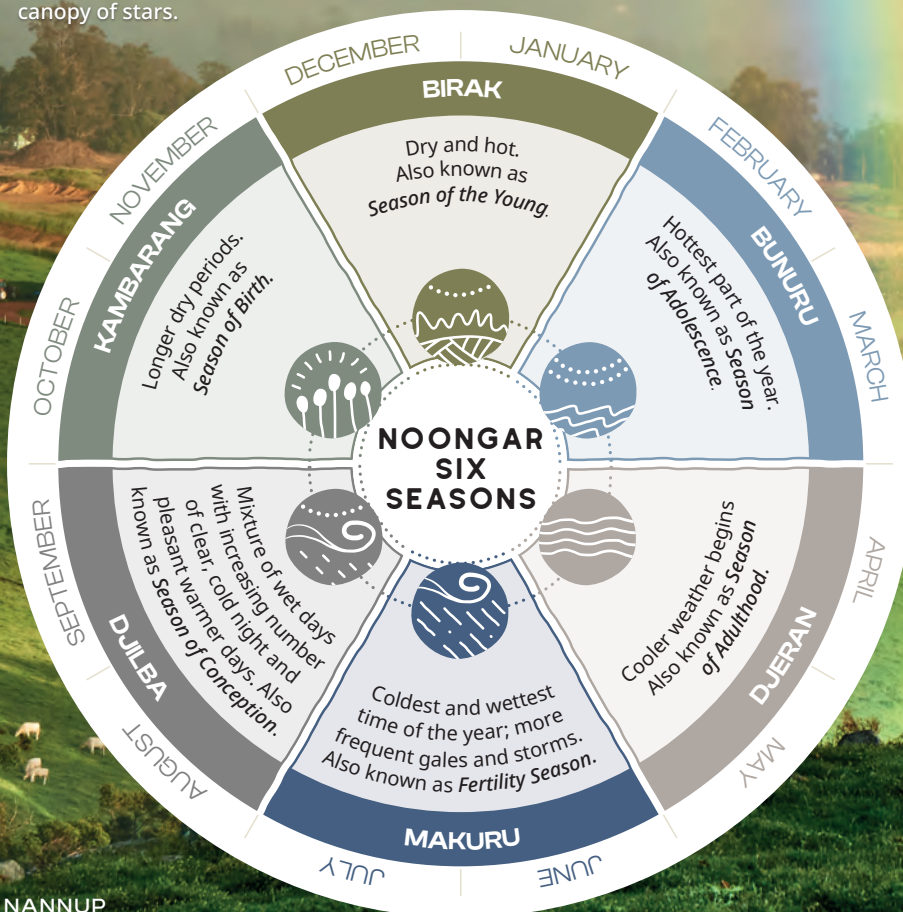
Djilba is all about transition. From the cold to the warm, from the wet to the dry, and from the old to the new. Clear days combine with warmer windy conditions, and there is the sound of whale song on the breeze. An explosion of yellow erupts as Acacias flower, and later in the season the stalks of the Balgas (grass trees) burst through. Right on the cusp of wildflower season, the fields, tracks, and hiking trails are awash with colour, making it the ideal time for bushwalking.



KAMBARANG

October - November

As the rain begins to subside, Kambarang welcomes longer and warmer days full of bountiful beauty. Kangaroo paws, orchids, and wattle paint the landscape like a canvas. The most striking display of all though comes from the Moodjar or Australian Christmas Tree. Bright orange-yellow flowers erupt like glowing orbs among the bush, signalling the real heat is on it's way. Snakes are abundant, returning after their winter brumation, as are young birds, marsupials, and whales. It is the season of birth after all!



BUNBURY GEOGRAPHE

A story etched along shore breaks, a picture painted with golden vineyard light, a song as ancient as the basalt rocks and mangroves beneath your feet. Just beyond the hum of Perth (Boorloo) awaits Bunbury Geographe, where dolphins arc through crystal clear waters and city culture entwines with adventurous trails. Zip along gravel mountain bike tracks, the perfume of nearby Peppermint trees soft on the breeze. Lose yourself in a kaleidoscope of street art, turning down hidden corners, a child on a treasure hunt. Here, sunsets linger, and so does the small talk. Every moment a tale you'll carry long after the journey ends.

📍 @visitbunburygeographe



SCAN TO LEARN MORE



HARVEY REGION | KORIJEKUP

📍 @harveyregion

Cradled between citrus groves and rolling green hills, Harvey is a soft daydream that whispers of heritage and heart. Sip fresh-pressed orange juice, wander garden paths, tread lightly along wildflower trails or sit beside shimmering waters at Harvey Dam or Lake Brockman. This is where orchards, dairy pastures, and bubbling brooks weave together in sweet countryside charm.

BUNBURY | GOOMBURUP

📍 @cityofbunbury

📍 @bunburycity

Blazing dusk spills over quiet beaches and seabreezes carry the scent of salt and summer on the air. Drift in and out of cafes, restaurants, and shops, like the gentle glistening tides of the nearby Indian Ocean. Wander hidden laneways seeking out artistic murals or tread estuarine boardwalks in search of undiscovered beauty. Share the shallows with wild dolphins at Koombana Bay, your shoulder with native birds at the Bunbury Wildlife Park, and the horizon with the setting sun. It's not just a stop on a map, it's the start of a new chapter.

COLLIE

📍 @visitcollierivervalley 📍 @visitcollie

Where the forest envelops you in hushed tones and the ground underfoot carries history in every step. Beneath towering Jarrah and Marri trees, ribbons of trails unfurl like secret pathways; mountain biking, hiking, canoeing, there's always action to be found. At Wellington Dam, one of the largest murals in the world spreads across stone, a masterpiece that must be seen to be believed. The air around here tastes of Eucalyptus and campfires come winter, as you wake to a chorus of birdsong beside lakes so blue that they'll make you think you're still dreaming.

DARDANUP & FERGUSON VALLEY

📍 @discoverfergusonvalley

📍 @fergusonvalley

Past the old train tracks, where the hills are stitched with rows of vines and the valleys are shrouded in morning mist. The sounds of laughter and clinking glasses echo from cellar doors and brewery floors, a tasting plate fresh with local produce soon to be devoured. The forest waits just beyond, a cathedral where the mighty King Jarrah Tree sits, having ruled over the land for centuries. Down by wildflower covered creeks, an army of cheeky gnomes grin up at you from mossy banks, well-worn paths, and gum-tree hollows. Here you'll always get a warm welcome from the more than 7,500 terracotta friends of Gnomesville.

CAPEL

📍 @discovercapel 📍 @shireofcapel

Waterfalls tumble over rust-red stone and time slows as you wander brooks, bushland, and beaches. Hike the Ironstone Gully Falls trail, where the scent of damp earth mixes with views of nearby pastures and ancient landscapes. Or head to the coast to see pale sands kissed by turquoise waters at Peppermint Beach. Let light, golden like honey, fall on you as you admire the 300-year-old Tuart trees of Ludlow Forest, before heading into the warm heart of Capel town and its cafes, farm gates, and friendly smiles.

DONNYBROOK

📍 @donnybrookwa

The air is sweet with fruit and the rustle of Jarrah and Marri leaves. Lush orchards beckon, full to the brim with apples, plums, apricots, and peaches, while tree-lined streets make for relaxed moments. In town, set the kids free in one of Australia's largest free adventure parks, or wander quaint artisan shops to prepare the perfect picnic. Roadside stalls spread out beneath wide country skies, and harvest is on the tip of the tongue.

BALINGUP

📍 @magicalbalingup

📍 @balingupvisitorcentre

Seasons turn like pages in a well-loved book, as you move to the slow rhythm of life. Spring wakes the hills to soft greens and a blush of wildflowers, while summer lingers in golden light, warming orchards and winding lanes. Autumn arrives in a flash of leafy embers – scarlet, russet, and gold - all flickering across the ground each time the wind comes calling. Then winter wraps the valley in silver mist and stillness. Along the main street cosy stores brim with pottery, natural skincare, and locally-made art. Life is unhurried here, time measured not in minutes but in the colours of the day.

TOP 5

THINGS TO DO

IN THE BUNBURY GEOGRAPHE REGION

1 Meet the friendly residents of Koombana Bay at the Dolphin Discovery Centre. Watch wild dolphins in the free interaction zone, with sightings most days, then step inside to see turtles, sharks, and a variety of marine life up close. Or head to the Bunbury Wildlife Park where you can hand-feed kangaroos, wave to a dingo, and meet some of the friendliest birds in town.

2 Explore Wellington National Park on foot or by bike along its many trails. Bring your own equipment or join a guided tour with local operators for insider knowledge. In spring, spot vibrant wildflowers, and in summer, swim or picnic at scenic inland waterholes like Honeymoon Pool. While you're there, be sure to admire the largest dam mural in the world!

3 Discover Western Australia's most diverse wine region. The Geographe Wine Region blends rich heritage with unique flavours, offering a tasting experience like no other. Savour wine and lunch amid the rolling hills of Ferguson Valley, or visit Donnybrook, where seasonal natural displays add to the region's charm.

4 There's no shortage of beautiful art around, with Bunbury and Collie coming alive through vibrant murals. Join a local guide to hear the stories behind each artwork and its deep connection to Country. At the Bunbury Regional Art Gallery, explore exhibitions that celebrate Aboriginal culture, the environment, and the lasting legacy of South West artists, making every visit a truly enriching experience.

5 Capture the perfect shot at some must-see sights like the vibrant Big Orange in Harvey; the sparkling waters of Black Diamond Lake near Collie; the quirky Gnomesville in Dardanup; and the cascading, hidden beauty of Ironstone Gully Falls in Capel.



♀ GNOMESVILLE, FERGUSON VALLEY



♀ BUNBURY WILDLIFE PARK



♀ THE BIG ORANGE, HARVEY



♀ MOUNTAIN BIKING, COLLIE



♀ WELLINGTON DAM, COLLIE



♀ VINEYARDS, FERGUSON VALLEY



VISITOR SERVICING IN BUNBURY GEOGRAPHE

Balingup Visitor Centre

Shop 1, 32 Bridgetown Rd
(South Western Hwy), Balingup
Tel: 0407 034 176
balinguptourism.com.au

Bunbury Visitor Centre

Bunbury Museum & Heritage Centre,
1 Arthur St, Bunbury
Tel: (08) 9792 7205
visitbunburygeographe.com.au

Collie Visitor Centre

156 Throssell St, Collie
Tel: (08) 9734 2051
collierivervalley.com.au

Ferguson Valley Visitor Centre

5 Ferguson Rd, Dardanup
Tel: (08) 9728 1551
fergusonvalley.net.au

LESS DRIVING. MORE DIVING.



DISCOVER
BUNBURY
Brighter.



bunburybrighter.com.au



Evedon Lakeside Retreat

Lakeside Cabins/Apartments — Weddings — Café / Restaurant — Kayaking — Bushwalks — Fishing



Our cosy cabins and spacious two-storey apartments are nestled in a spectacular jarrah forest on the banks of stunning Evedon Lake. Watch the sunset over the lake, enjoy your cosy log fire (seasonal), fish, kayak or take a walk along the estate's many forest trails.

Cook up a gourmet feast in your kitchen or enjoy a meal in our cafe restaurant.

Superbly located in the Ferguson Valley, nearby to Honeymoon Pool, MTB trails, just 20 minutes from Bunbury's beaches and just two hours from Perth, Evedon Lakeside Retreat is perfect for a family holiday or romantic getaway. See website for cafe restaurant opening hours and live music- bookings essential.

205 Lennard Rd, Burekup | T: 9726 3012 | E: info@evedon.com.au | www.evedon.com.au

WA NT TOURS



High-quality guided tours in comfortable vehicles for small groups.

Flexible itineraries with year-round departures.

☎ 08 9331 3933

✉ info@want-tours.com.au

want-tours.com.au



Need to escape the rat race?
Lake Brockman Tourist Park is a world away, right on your back doorstep.

Nestled in the state forest and overlooking the fresh blue waters of Logue Brook Dam, we are only an hour and a half south-west of Perth (off South-West Highway, just before Harvey).

From family glamping tents and cabins to couples glamping (with a view) plus our spacious powered and unpowered sites, we can cater for any camping set up.

Every camp has its own fire pit (during the winter months) where you can relax and unwind under the stars and roast your marshmallows around the campfire while creating magical memories with family & friends. Our campsites are also pet friendly.

Our cafe is open 7 days for great coffee, breakfast, lunch and light snacks.

Book your next camping getaway at Lake Brockman Tourist Park or Logue Brook Campground online today or call our friendly staff on (08) 9733 5402.

Email: lakebrockman@gmail.com lakebrockman.com.au

**G'DAY
PARKS**





HARVEY
River
ESTATE
GEOGRAPHE - WESTERN AUSTRALIA

CELLAR DOOR & CLIMB THE BIG ORANGE

183 Third Street, Harvey, WA 6220 | 10am - 3pm
PHONE: (08) 9729 2588
WEB: harveyriverestate.com.au



GEOVINO

A WINE BAR AND BOTTLE SHOP, FOR THE
NEIGHBOURHOOD BY THE NEIGHBOURHOOD

83 Uduc Road, HARVEY, WA 6220
PHONE: (08) 9729 1275

OPENING HOURS:

Wed to Thu 10am - 6pm | Fri 12pm - 8pm | Sat 11am - 5pm



Aboriginal cultural tours in the South West

From traditional fire making to catch and cook on the beach, dreamtime stories and cultural songs and music, experience the world's oldest living culture in the South West.

Tourism
WESTERN AUSTRALIA

WAITOC.COM
Ancient Tracks - New Journeys

Holiday in WA

When you holiday in WA, book with Sustainable Tourism Accredited Businesses and you'll get a quality assured operator wherever you go.

From hotels and guided tours to shops and services, you can expect quality, reliability and great customer service.

To book your holiday with Sustainable Tourism Accredited Businesses, visit
www.holidayinwa.com.au



MARGARET RIVER REGION

Between calm coves of glistening turquoise waters and forests that stand guard over ancient limestone caves, the Margaret River Region is a canvas you won't be able to tear your eyes away from. Here, the world's oldest continuous culture speaks through the stories of the Wadandi (Saltwater) people, who have called this place home for more than 50,000 years. Waves curl into legend at world-class surf breaks, grapes ripen under a southern sun, and unforgettable adventure awaits around every bend. Mornings in this part of the world bring the scent of coffee and salt air, afternoons are built for relaxing swims and sipping Chardonnay, and evenings are best spent watching sunsets set the sky on fire.

@margaretriver | @margaretriverwineregion



SCAN TO LEARN MORE

BUSSELTON | UNDALUP

@citybusselton

City meets sea at the edge of sparkling Geographe Bay, a coastal paradise etched from warm memories, good coffee, and family-friendly escapes. Home to the famed Busselton Jetty, stretching beyond belief more than 1.8km towards the horizon. Board the red train to reach its end, where an Underwater Observatory takes you to sunken blue depths, and snorkelling offers a glimpse of an aquatic art gallery. Back on dry land, there's breweries, bold wines, bustling restaurants, and balmy afternoons calling. Nothing says vacation like fish and chips on the foreshore.

DUNSBOROUGH | QUEDJINUP

Wander white sandy bays, edged with Paperbark trees and bushes of Banksias. Ahead of you the water is so still it could be a mirror, while around the bend the waves surge to the delight of surfers. Linger like an afternoon reverie, this is a place for wonder, where whales cruise the coastline beside Cape Naturaliste Lighthouse, and hikers begin the arduous but rewarding 5-day trek along the Cape to Cape track. In town, trendy cafes, award-winning bakeries, and artisan stores line the streets, while restaurants offer some of the freshest seafood around. Nothing says dreamy quite like a sunset from the shores of Eagle Bay.

YALLINGUP

Wind-blown, surf-kissed, sun drenched. Must be the cosy coastal hamlet of Yallingup. Its beaches – Smith's, Supertubes, Rabbits, or Injidup – are a haven for nature seekers and surfers alike. Behind the dunes a creative pulse beats, with art galleries, boutique wineries, and quirky cafes ideal for an afternoon treat. Discover why the local Wadandi people named this the 'place of caves', with ancient stories lying beneath the brush at Ngilgi Cave. See majestic stalactites, stalagmites, and colourful shawls capture a time long since passed. Continue to embrace that magic down at Sugarloaf Rock, where fairy-floss skies make for sweet memories.

COWARAMUP

Affectionately known as 'Cowtown,' this is a place of pastures and playful charm. Once a sleepy crossroads, now it is a quiet hub of cafes, gourmet treats, and organic wines. The countryside hums with creativity from artists and farmers alike, with one of the best past-times spending your day roaming the streets in search of 42 life-sized fibreglass Friesian cows, blending together the best of both worlds. It's a gentle welcome that says you're never too old for a scavenger hunt.

MARGARET RIVER | WOODITJBILYUP

Dappled sunlight streaks through forest canopies, while in the distance there's the thunder of rolling surf as it breaks against dramatic shorelines. Minutes from the heart of town you'll discover the Margaret River Mainbreak, a beacon of the surfing community and host to the Margaret River Pro. Just down the road, hit the paths of Boranup Forest, a luminous exploration into lush green ferns, towering Karri trees, and quiet wonder. Sip carefully curated wines from nearly 100 cellar doors or sample gourmet food and rustic brews. You know you're living like a local when it's all about the slow life.

AUGUSTA | TALLINUP

Where two oceans meet, you'll find a town untouched by time. Weaving like an artery through the landscape, the Blackwood River provides banks for fishing, and tides for paddleboarding. While around the headland, Cape Leeuwin Lighthouse stands sentinel, winds whipping old cottages where families used to live and help light the way. Nearby, quiet marinas hold dreams of voyages, and the songs of southern right and humpback whales catch the breeze on their great migration north.

TOP 5 THINGS TO DO

IN THE MARGARET RIVER REGION

1 Renowned for its world-class wine and fine dining, the Margaret River Region offers almost 100 cellar doors to explore. Enjoy cosy chocolate and wine pairings by the fire in winter, long-table lunches amid blooming landscapes in spring, or indulge in gourmet delights at the region's food festival, Pair'd.

2 Make a day of it at the Busselton Foreshore, where adventure awaits! Ride the train along the Southern Hemisphere's longest timber-piled jetty, then explore the underwater observatory beneath the planks. Enjoy lunch at a waterfront brewery, indulge in chocolate treats, and step back in time at the Busselton Cultural Precinct. For extra fun nearby, try mini-golf, or a high ropes adventure in Tuart Forest.

3 Pack your towels, umbrellas, and floaties - it's time for a beach day! There's plenty of options to unwind on soft sands beside sparkling turquoise waters. Relax at Meelup Beach, Point Picquet, or Eagle Bay near Dunsborough, catch some waves at Smiths or Yallingup Beach, and don't forget to say hello to the stingrays at Hamelin Bay.

4 Beyond its delicious wine and stunning coastlines, the Margaret River Region is rich in history and culture. Wander through the century-old Boranup Forest, explore the depths of its many caves, and climb historic lighthouses - don't miss Cape Leeuwin Lighthouse, the tallest on mainland Australia! Along the way, connect with the region's Aboriginal heritage through Dreaming stories, cultural sites, and Indigenous-led tours.

5 The Cape to Cape Walk Track is a bucket-list experience, stretching 123 kilometres along the Leeuwin-Naturaliste Ridge between Cape Naturaliste and Cape Leeuwin lighthouses. Hike with the ocean on one side and forests and wildflowers on the other. Tackle the full trail in 5-8 days or explore sections at your own pace. Guided tours reveal hidden spots, and whales can sometimes be seen offshore.



♀ POINT PICQUET, EAGLE BAY



♀ BUSSELTON JETTY



♀ ARAVINA ESTATE, YALLINGUP



♀ CAPE TO CAPE EXPLORER TOURS, MARGARET RIVER



♀ BORANUP FOREST, MARGARET RIVER REGION



VISITOR SERVICING IN THE MARGARET RIVER REGION

Busselton Visitor Centre

17 Foreshore Pde,
Busselton Foreshore
Tel: (08) 9780 5911
margaretriver.com

Margaret River Visitor Centre

100 Bussell Hwy,
Margaret River
Tel: (08) 9780 5911
margaretriver.com

DID YOU KNOW?

The Margaret River Region
is closer than you think,
with direct flights from
Melbourne and Sydney to
Busselton-Margaret River
Airport operating with
Jetstar Australia.

♀ CAPE LEEUWIN LIGHTHOUSE,
AUGUSTA





ARAVINA
ESTATE

EAT, SIP, PLAY, STAY

THE ARAVINA EXPERIENCE

Aravina Estate offers Award-Winning Wines,
Lakeview Restaurant and Pizza Bar,
8 Waves Brewing Co, WA Surf Gallery,
Live Music Saturdays, Playground,
Accommodation - 21 Modern Cabins.

Perfect for a relaxed day out or weekend escape!

61 Thornton Road, 6282 Yallingup WA | (08) 9750 1111



@aravinaestate

www.aravinaestate.com



MORE THAN JUST A JETTY

Enjoy One of WA's Top Bucket-List Experiences

Book Now at www.bussetonjetty.com.au | 08 9754 0900



WILD HOP
BREWING COMPANY

OPEN 7 DAYS
FAMILY FRIENDLY // DOG FRIENDLY
NATURE BASED PLAYGROUND
FAMILY-STYLE WOODFIRED SHARE MENU
BEERS BREWED ON SITE // LOCAL WINES + SPIRITS
HOPPY HOUR: WEEKDAYS 3.30 - 4.30PM

wildhopbeer.com.au **1301 WILDWOOD ROAD, YALLINGUP**

CAPE MENTELLE
MARGARET RIVER

**WINERY BY DAY
OUTDOOR CINEMA BY NIGHT**
DECEMBER - JANUARY

Book online
CAPEMENTELLE.COM.AU

Holiday in the South West

at RAC's holiday Parks and Resorts

There's always something new to experience in the South West and whether you're discovering new beaches, tasting your way through the Margaret River food and wine region or relaxing amongst nature, our parks and resorts offer the perfect base for every kind of holiday.

Book your South West adventure now.

RAC
members
enjoy
exclusive
rates

Call 1800 871 570 or visit
racparksandresorts.com.au

Terms and conditions apply. RAC member discount not applicable on already discounted rates. Discounts available on direct bookings only made online or via phone. For more information visit our website.



For the better



FOREST RISE

Chalets & Lodge
your private escape

MARGARET RIVER WINE REGION



SURROUND YOURSELF WITH NATURE

You will have the ultimate privacy on
our unique 240-acre private estate.

Relax your mind, recharge your soul, enjoy a
private massage and yoga session during your stay.

Surround yourself with nature and the soothing
sounds of our abundant birdlife. Find balance in
your busy life by booking your next escape with
our friendly, experienced team who will ensure
you leave feeling refreshed and renewed.

Forest Rise is nestled in the heart
of the Margaret River Wine Region.
Surrounded by the finest wineries,
restaurants and only a short drive to
stunning beaches along our coastline.

REST | RELAX | RECONNECT

231 YELVERTON ROAD,
YELVERTON WA 6280

Ph: (08) 9755 7110

E: relax@forestrise.com.au

W: forestrise.com.au



Pullman Bunker Bay Resort

Margaret River's Premier Beachfront Destination

BOOK NOW



pullman
HOTELS AND RESORTS

Good Beer. Farmed Here.

Fresh beer, farm-to-plate feeds,
and good times in a converted
hay shed & dairy farm.

25MIN SOUTH OF BUSSELTON | OPEN 7 DAYS

beerfarm.com

BEERFARM
CULTIVATING GOOD TIMES



GRALYN ESTATE MARGARET RIVER — EST. 1975 —



Crafting premium wine on our
family vineyard since 1975.

Gralyn Estate have been quiet
pioneers of aged port styles
for over forty years, alongside
highly regarded expressions
of regional cornerstones,
Chardonnay and Cabernet
Sauvignon.

Open Daily
10.30am-4.30pm
Tastings and Sales
4145 Caves Road,
Wilyabrup

gralyn.com.au  

Dunsborough Evenings, Reimagined

From 4 pm daily, Wayfinder invites you to settle in for seasonal plates, easy elegance, and organically grown wines that speak of place.

Discover our new cocktail list, and keep an eye out for upcoming events. Either way, you'll want to stay a while.

Scan to book



wayfinderdunsborough.com.au

wayfinder



You take
a holiday
*We'll take
the wheel*

Get out of town and explore our backyard for less with Transwa. Book your next trip to Australia's South West at transwa.wa.gov.au or call **1300 662 205**



Transwa



Image Credit Frances Andrijich

CARAVAN
& CAMPING
WESTERN AUSTRALIA

Discover Wonder & Warmth Out West



Scan to explore caravan & camping shows, download the ultimate guide to planning your adventure and so much more!

caravanwa.com.au | [@caravanandcampingwa](https://www.instagram.com/caravanandcampingwa)

*One of the “best wineries to dine at,”
- Delicious Magazine*



MARGARET RIVER
ASIAN DINING

**687 ELLEN BROOK RD
COWARAMUP WA 6284**

**08 6285 5800
MISSCHOWS.COM.AU**



EST. 1975

BAYWATCH RETREAT

AUGUSTA, WA

Escape to Coastal Tranquility

Experience boutique coastal accommodation with breathtaking views and easy access to WA's top attractions. Whether it's wildflowers, wine, or wellness, our eco-friendly retreat is your perfect escape.

Cape Leeuwin | Margaret River Region
Couples | Families | Corporate Retreats
Oceanview suites | Garden studios | Family rooms

For bookings, visit our website at:
www.baywatchretreat.au or call 1300 620 092

baywatchretreat.au [baywatchretreat](https://www.facebook.com/baywatchretreat) [@baywatchretreat](https://www.instagram.com/baywatchretreat)



Fishbone Wines is a boutique winery & restaurant located in Wilyabrup, Margaret River. We strive to produce wines which reflect the character, diversity & natural beauty of the region.

422 Harmans Mill Rd, Wilyabrup WA 6280 • 10am - 4.30pm
Restaurant bookings recommended

(08) 9755 6726 fishbonewines.com.au



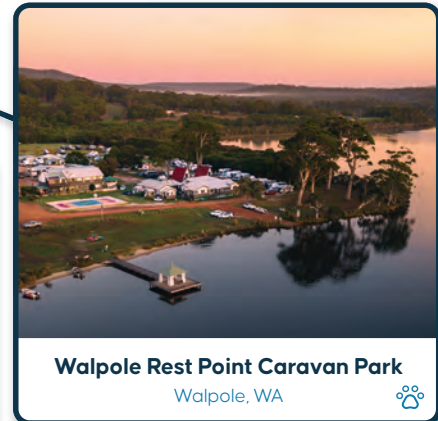
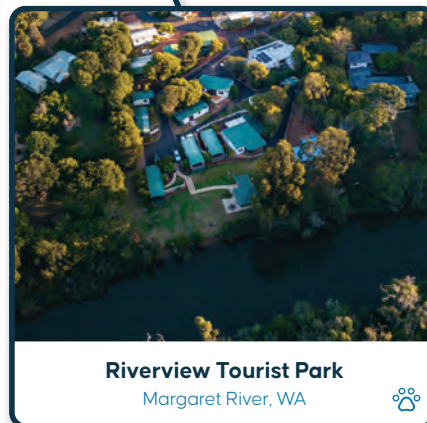


Summerstar

Tourist Parks

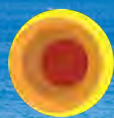
 **Pet Friendly Parks**

**G'DAY
PARKS**



Scan the QR code to check availability,
pricing, and make a booking!

*Moments
to
cherish*



BKB HOLIDAYS

YOUR SOUTH WEST, OUR SPECIALTY

At BKB Holidays, we know Western Australia like no one else. From the rolling vineyards of Margaret River to the pristine coastline of the South West and beyond, our team are WA destination specialists. Sit back, relax and let us craft your holidays that showcases the very best of our state.

SCAN TO START PLANNING
YOUR WA ADVENTURE



www.bkbholidays.com

Swings & Roundabouts

VISIT US IN TOWN OR AT THE VINEYARD

**SWINGS & ROUNDABOUTS
VINEYARD**



2807 Caves Road, Yallingup
Follow @swingsyallingup
T: 08 9756 6735
www.swings.com.au

**SWINGS & ROUNDABOUTS
TOWN**



DRINK
AWARD WINNING
WINES
EAT
WOOD FIRED PIZZA
& FULL MENU

85 Bussell Hwy, Margaret River
Follow @swingsmargaretriver
T: 08 9758 7155
www.swings.com.au



Iconic



Idyllic

Self-contained luxury apartments
next to historic Caves House, set
in acres of spectacular gardens
leading to Yallingup Beach.
seashells.com.au



SEASHELLS
YALLINGUP



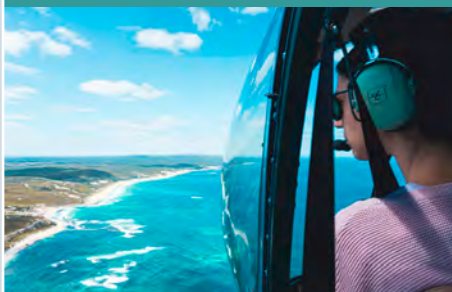
SCENIC HELICOPTERS



From indulgent helicopter winery tours to magical sunset flights, romantic beach picnics to rugged helifishing adventures, we have something highly memorable for everyone!



With bases in Margaret River, Albany and Coral Bay, we also offer luxury multi-day touring experiences along the entire Western Australian coastline.



Simply the best way to see WA — look us up on your next big adventure!

jackson@scenichelicopters.com.au
scenichelicopters.com.au
0499 SCENIC (0499 723 642)



WEBSITE



The best of the South West, all under one roof

Find our trading hours & event schedule online



originsmarket.com.au

86 West St, Busselton WA 6280 (next to Kmart)

SOAP & SKINCARE | GOURMET FOOD | EXPERIENCES



DISCOVER THE ULTIMATE OLIVE OIL EXPERIENCE



VASSE VIRGIN

SOAP FACTORY & WORKSHOPS
135 Puzey Road, Wilyabrup WA | Ph. (08) 9755 6111

RETAIL STORE
Shop 5, 103 Bussell Highway, Margaret River, WA

www.vassevirgin.com.au

RayWhite

All of Us.

Working for you.

When you choose one of us, you are getting more than just one person. Our team, our experience, our technology, our marketing and our global reach come together to deliver a service beyond expectations. That's All of Us, working for you.



Ray White Stocker Preston

Busselton | Dunsborough | Augusta | Margaret River | Nannup | Bridgetown
raywhitestockerpreston.com.au



ALL SEA CHARTERS
WHALE WATCHING TOURS

Step onboard Whale Song, the only purpose-built whale watching vessel in WA, a safe and stable vessel with full walkaround on both levels, ensuring all get a front row view. Onboard Marine Biologist providing commentary.

**BUSSELTON
DUNSBOROUGH
AUGUSTA**

BOOK NOW **0417 794 008** whalewatchingcharters.com.au

See, Taste, Discover the Margaret River Region



South West ECO DISCOVERIES

Nature & wine tours with local guides
E: info@southwestecodiscoveries.com.au
Ph: 0477 049 722

SouthWestEcoDiscoveries.com.au



Fresh local Seafood

www.bluemannbistro.com.au

Your home away from home
in Australia's South West

Private holiday homes in
Dunsborough, Yallingup and Quindalup.
Rural Retreats
Elegant Apartments
Coastal Views | Spacious Villas
Winter Specials

✉ stay@capeexec.com.au
@capeexec
capeexec.com.au

cape executive
HOLIDAY PROPERTIES

CAVES HOUSE
HOTEL & APARTMENTS

HOTEL | BAR
RESTAURANT | LIVE MUSIC
WEDDINGS | EVENTS

18 YALLINGUP BEACH RD
+61 8 9750 1888
caveshousehotelyallingup.com.au




WINERY · RESTAURANT

WISE
EAGLE BAY

DISTILLERY · WEDDINGS



EXPLORE




**Award-winning food & wine. Small-batch spirits.
One iconic ocean-view destination.**

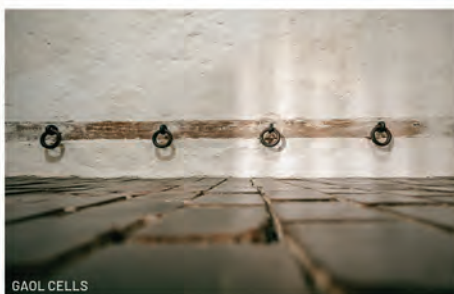
OPEN 7 DAYS
BREAKFAST 8AM-10.30AM | LUNCH FROM 11AM | CELLAR DOOR 10AM-5PM
237 Eagle Bay Road, Cape Naturaliste WA 6280 | Ph: 08 9755 3331
wisewine.com.au |  




OLD COURTHOUSE

OPEN DAILY | FREE ENTRY

GALLERY STORE | CAFÉ | ART EXHIBITIONS | HISTORY | CREATIVE WORKSHOPS



SALTWATER

Follow us on socials - @saltwaterbusseton

SALTWATERBUSSETON.COM.AU



BUSSETONCULTURALPRECINCT.COM.AU | 4 - 9 QUEEN STREET, BUSSETON



- Situated on the pristine waters of Geographe Bay
- 2 & 3 bedroom resort family-style cottages including adults only beachfront cottages

Ph: 08 9756 8885

info@dunsboroughbeachcottages.com.au
dunsboroughbeachcottages.com.au



KoomalDreaming

Aboriginal Cultural Tours
Native Foods
Music & Art

Ngilgi Cave, Yallingup
Bookings Essential
koomaldreaming.com.au



★★★★★
5 TOP STAR WINERY
2026 HALLIDAY
WINE COMPETITION



DOMAINE NATURALISTE

BY BRUCE DUKES

Margaret River

A truly memorable Margaret River wine experience

Domaine Naturaliste's Cellar Door offers a relaxing space where you can taste our fragrant, textured and delicious award-winning Margaret River Wines.

Enjoy one of our signature seated wine flights while you take in the picturesque Wilyabrup landscape. With focus on the classic varietals, we offer a range of tasting options, plus delicious made to order cheese or charcuterie boards. Bookings recommended.

160 Johnson Road Wilyabrup, Margaret River

Open daily 10am - 5pm

domainenaturaliste.com.au • 08 9755 6776



SOUTHERN FORESTS & VALLEYS



To the left, windswept dunes, to the right sun-warmed vineyards, and up ahead - still, starlit lakes come evening. Nature's wonder abounds here, where soaring Karri, Marri, Jarrah, and Tingle trees are ripe with rain. The sunlight a shifting mosaic on the forest floor. The rivers a lazy passerby, slipping quietly into glassy inlets and secret coves. Wildflowers scatter across bushland like confetti tossed by the wind. Orchards rise through misty valleys and winding roads. Tracks beg to be taken, gifting pockets of magic in art trails, waterfalls, and whale song. Black cockatoos trace arcs across the sky, and truffles lie in wait, ready to be devoured. Let the forest slow your heartbeat, the coast quicken your spirit, and the land call you back, again and again and again.

@southernforestsandvalleys

@southernforestsvalleys



SCAN TO LEARN MORE

♀ LAKE KATHERINE, QUINNINUP

BOYUP BROOK

Quiet grandeur mixes with the strum of guitar strings, in this agricultural heartland. Discover unexpected treasures tucked behind warm weatherboard facades, with collections of bright beetles, feather-light butterflies, glittering gemstones, and ancient minerals that showcase the lands layered history, all free to view. Roam the streets in search of country music memorabilia and stories. Or indulge in a decadent ice cream snack come spring and summer, when wildflower tours and sunlit afternoons are a regular occurrence.

GREENBUSHES

Beneath a canopy of green Eucalypts, history seeps from the soil in this serene country town. The hush of the forest gives way to tales of early mining life as you wander wild bush trails and admire rust-worn machinery at the Heritage Park. Just beyond, the waters of Greenbushes Pool mirror reflections from the sky, and the Public Mine Lookout provides an eagle eye view of the 265m deep Cornwall pit, with its vibrant emerald hues. Nights here are for sharing stories and stars.

NANNUP

📍 @experienancenannupwa

There's poetry in these forests, where mist-laced mornings cradle timber-lined lanes. Feathery ferns dot the banks of the Blackwood River and come August, the town erupts in colour with its famous Tulips. Creative energy pulses through the main street in artisan galleries, music festivals, and shops filled to the brim with handmade local treasures. Bike at the ready, it's time to hit the tracks on some of the best gravel and mountain riding around.

BRIDGETOWN

A postcard come to life. Think soft morning sunlight, fog-layered timberlines, cottage gardens, and heritage homes around every corner. Branches brush the Blackwood River, which ripples in wait for canoers, kayakers, or a line to be cast. Each season offers enchanted gifts; in misty winter mornings, breezy summer nights, fiery colours come autumn, and pastel blossoms in the spring. It's a timeless embrace of old-world country charm.

MANJIMUP

📍 @manjimup

📍 @shireofmanjimup

The promise of adventure hangs in the air between lofty Karri trees and rich, fertile farmlands. The canopies of the forest shift in the wind like green ocean swells, while orchards hide earthly gold and the joy of a mill town reborn in gourmet delight. Avocados, cherries, and the rare Perigord black truffle are seasonal notes to tantalise appetites, born of gentle trail walks and sprawling adventure playgrounds. In the heart of town, the Manjimup Heritage Park is a patchwork of history, the old railway platform making you swear you just heard the hiss of steam.

PEMBERTON

📍 @pemberton_australia

📍 @pembertonvisitorcentre.australia
Cathedral forests, cascading waterfalls, and sand-dune systems that reign over the landscape. Climb the Dave Evans Bicentennial Tree and gaze out upon your kingdom from on high. Tread forest-floor paths to Beedelup Falls, or soak in the moss-green surrounds of Pemberton Pool.

Tram tracks whisper of exciting escapades, where you can literally reach out and feel nature at your fingertips. Find your way into town and culinary cravings of farm fresh produce, alongside cool-climate wines infused with earthy elegance. There's a story in every sip and a magic in these woods.

NORTHCLIFFE

Sunlight spills across heathlands and across vast, untouched forests. Nestled between the Warren, D'Entrecasteaux, and Shannon National Parks, you'll be embraced by soft breezes that blow in from nearby Windy Harbour, the taste of salt on their winds. Sculptures rise from moss, charcoaled faces peek out of tree hollows, and art blooms amid Acacia Wattle, at Understory Art and Nature Trail. Nearby, you can clamber the rocky granite outcrop of Mount Chudalup for breathtaking views, a quiet invitation for introspection.

WALPOLE | KWALLUP

Unspoilt landscapes. Unwritten stories. Unparalleled seclusion. Walpole is a living masterpiece, where Red Tingle trees rise like an ancient army and the wild waves of the Southern Ocean carve cliffs with unbelievable views. Head to the Valley of the Giants Treetop Walk and float across 40m-high aerial platforms, draped in mist. Drift towards the coast on an eco-cruise, where wildlife springs from the tree-lines and the sun warms even the coldest of bones. Dusk hovers over silver inlets and starlight filters through fern arches in these parts, reminding you there's plenty of wow left in the world.

TOP 5

THINGS TO DO

IN THE SOUTHERN FORESTS & VALLEYS

1 Explore the South West's food bowl, home to truffles, avocados, cherries, and marron. Drop by farm gates for fresh produce, enjoy a paddock-to-plate meal, or try your hand at truffle hunting. Don't forget to visit local bakeries for fresh bread, pastries, and local delicacies, to truly soak up the region's seasonal flavours.

2 For adventure seekers, the mountain biking trails in and around Nannup offer something for everyone, from beginners to seasoned riders. The Nannup Tank 7 Mountain Bike Park features 29 trails winding through a working pine plantation, with varying terrain, speed, and difficulty. This is a place that will get your heart racing and provide an unforgettable ride.

3 Discover the enchanting beauty of Pemberton. Take a refreshing dip in Pemberton Pool, admire the rush of Beedelup Falls, hop on a tram to the Cascades, or explore Yeagarup Dunes (the largest landlocked dunes in the Southern Hemisphere) by 4WD. For a magical walk, the Gloucester Route trail loops through the towering, whimsical Karri forest.

4 A truly unique way to experience the lush Southern Forests & Valleys is by climbing the Dave Evans Bicentennial Tree - if you're brave enough! From the platform, enjoy sweeping views of the surrounding forest canopy and keep an eye out for the abundant birdlife that calls this area home. It's a remarkable way to connect with the region's natural beauty.

5 Paddle along sections of the Blackwood Valley by canoe or kayak, with options near Boyup Brook, Bridgetown, or Nannup, to soak up the peaceful riverscape. For a thrill, try Australia's first combined mountain bike and packrafting adventure at Nornalup Inlet, where forest trails meet calm waterways.



♀ WOW WILDERNESS TOUR, WALPOLE



♀ MARRON, MANJIMUP CHERRY HARMONY FESTIVAL



♀ DAVE EVANS BICENTENNIAL TREE, PEMBERTON



♀ MOUNTAIN BIKING, NANNUP



♀ PEMBERTON TRAMWAY



VISITOR SERVICING IN THE SOUTHERN FORESTS & VALLEYS

Boyup Brook Visitor Centre

Cnr Bridge St & Abel St, Boyup Brook

Tel: (08) 9765 1444

boyupbrooktourism.com.au

Bridgetown-Greenbushes Visitor Centre

11 Stewart St, Bridgetown

Tel: (08) 9761 1740

bridgetown.wa.gov.au

Manjimup Visitor Centre

151 Giblett St, Manjimup

Tel: (08) 9771 1831

manjimupwa.com

Nannup Visitor Servicing

Download the free 'Experience Nannup'
app from experiencenannupwa.com.au

Northcliffe Visitor Centre

Muirillup Rd, Northcliffe

Tel: (08) 9776 7203

visitnorthcliffewa.com.au

Pemberton Visitor Centre

61 Brockman St, Pemberton

Tel: (08) 9776 1133

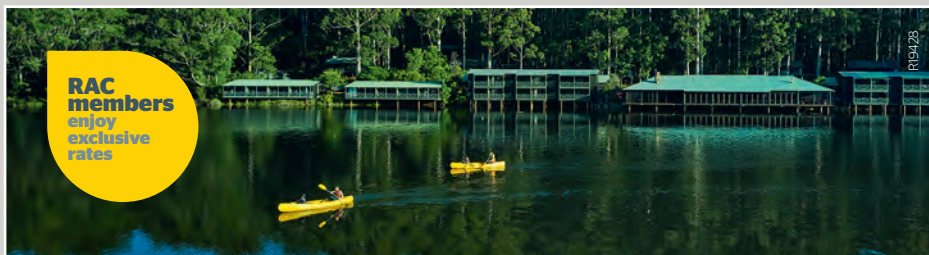
pembertonvisitor.com.au

Walpole-Nornalup Visitor Centre

Pioneer Park, South Coast Hwy, Walpole

Tel: (08) 9840 1111

walpole.com.au



A tranquil setting amongst the karri trees

- » Self contained wood cabins with lake or forest views and fireplace
- » Hotel-style rooms
- » Powered and unpowered caravan & camping sites
- » State of the art camp kitchen and laundry
- » Lakeside restaurant and resort activities

Call 08 9776 2020 or visit racparksandresorts.com.au



HOUSEBOAT HOLIDAYS Walpole

Delight in the breathtaking beauty of the Nornalup and Walpole Inlets from the comfort and privacy of your own superbly appointed Houseboat.



PO Box 112,
Walpole WA 6398
Tel (08) 9840 1310

Email: houseboatswa@westnet.com.au

Web: www.houseboatholiday.com.au

EXPERIENCE PEMBERTON'S MOST ICONIC ADVENTURE ★★★★★

Towering Karri forests,
Shifting Yeagarup Dunes
Wild beach only accessible by 4WD

Guided small group eco tour into the Warren & D'Entrecasteaux
National Parks – Picnic lunch included

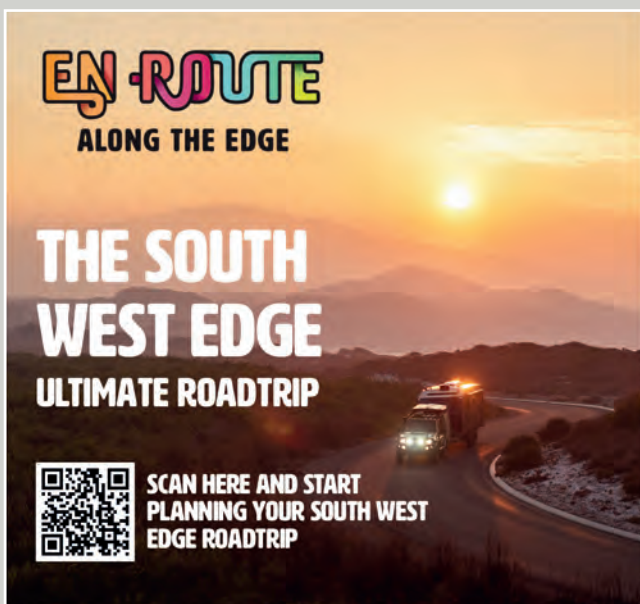
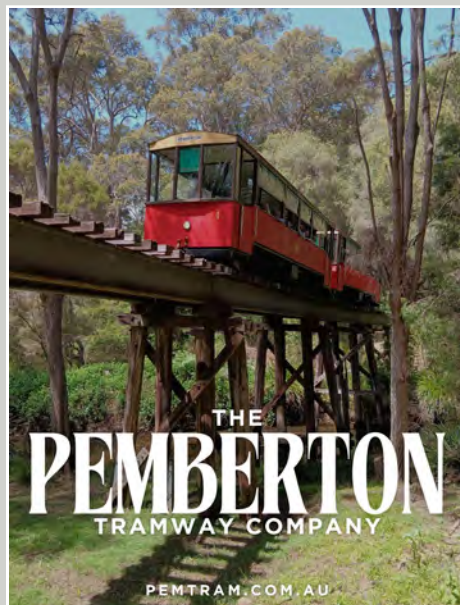


+61 427 133 335

BOOK TODAY



www.pembertondiscoverytours.com.au



SCAN HERE AND START
PLANNING YOUR SOUTH WEST
EDGE ROADTRIP

- ROTTNEST ISLAND
- BUSSELTON & YALLINGUP
- PEMBERTON & NORTHCLIFFE
- DENMARK
- ALBANY
- ESPERANCE
- KALGOORLIE & PERTH



"Amazing place... Huge adrenaline rush!"



Promo code: ASW26
For a free small coffee

AERIALADVENTUREPEMBERTON.COM.AU



SOUTHERN FORESTS & VALLEYS

Discover Trails and Outdoor Adventures in the Southern Forests & Valleys. Our region is a nature lover's paradise, offering a diverse range of trails and outdoor activities for the whole family to enjoy.

Whether you're seeking a peaceful walk, an adventurous ride, or a scenic paddle, the region invites you to explore its diverse natural landscapes. Each town features a variety of short trails, as well as longer routes for those looking for a greater challenge. Many of these trails also offer fascinating insights into the area's rich history and culture. With so much variety, there's something to suit every pace and preference.

Renowned as Western Australia's food bowl, the region is celebrated for its exceptional quality and variety of fresh produce. Farm gates, roadside stalls, and vibrant markets let visitors experience this abundance firsthand, with produce often picked the same day it's sold.

Whether hiking, biking, paddling, riding, or recharging, the region invites you to reconnect with nature and explore its breathtaking landscapes and rich harvest of fresh, local produce.



Visitor Centres

Manjimup (08) 9771 1831

Pemberton (08) 9776 1133

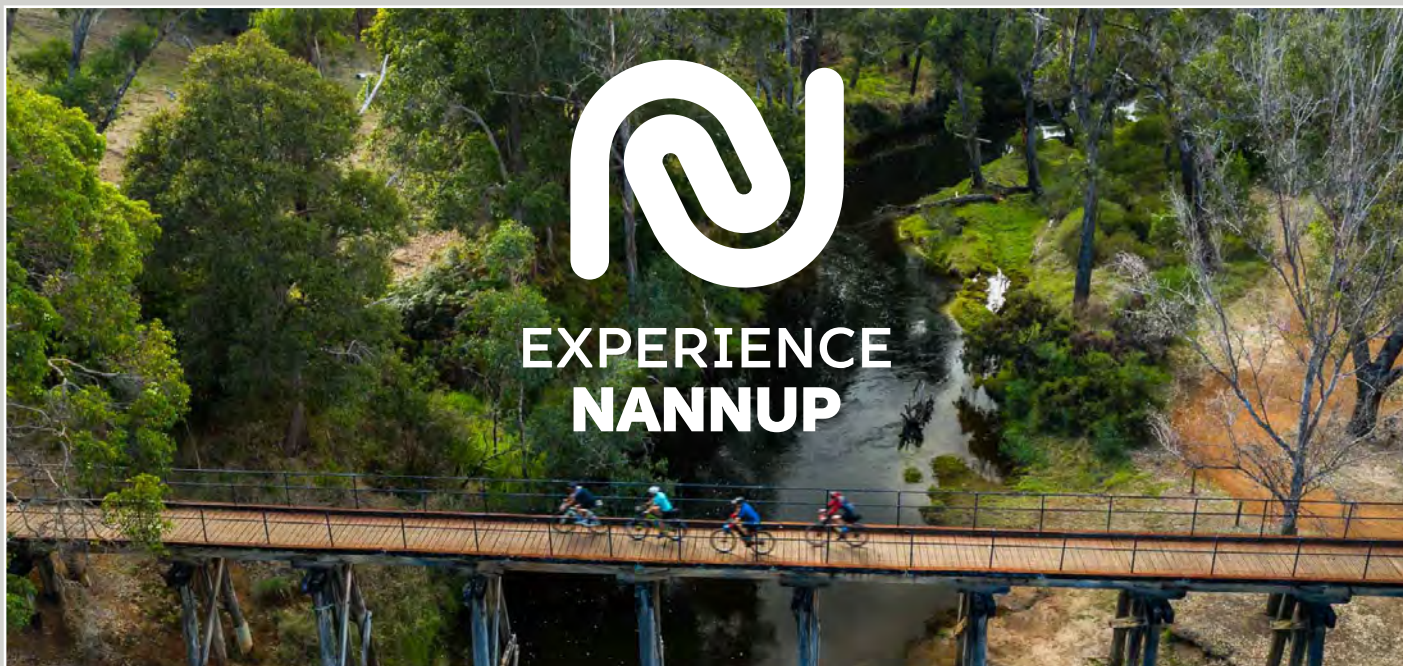
Northcliffe (08) 9776 7203

Walpole (08) 9840 1111



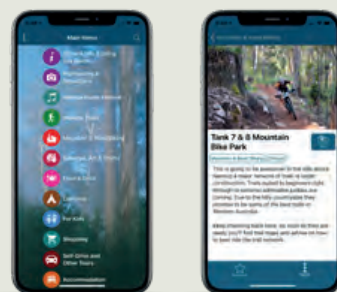
SHIRE OF
MANJIMUP

For more information visit:
southernforestsandvalleys.com



EXPERIENCE NANNUP

EXPERIENCE ALL THAT NANNUP HAS TO OFFER!



From unique events to the ultimate in nature, it's time you experienced Nannup. Have everything you need at your fingertips and start exploring with the Experience Nannup app. Download it today!

**DOWNLOAD
FREE TODAY**



AUSTRALIA'S LEADING ART IN NATURE EXPERIENCE



OPEN DAILY - FAMILY FRIENDLY - NATIONALLY UNIQUE - NORTHCLIFFE - WWW.UNDERSTORY.AU

FORM.
building a state of creativity

BALGANG ALBANY

Lighting the Sound

13–15 March | 20–22 March | 27–29 March 2026



The world's largest light installation transforms
Albany's landscapes into a breathtaking masterpiece
by renowned light artist Kari Kola.

Project Partner



Major Supporter



Major Partner



**WESTERN
AUSTRALIA**
WALKING ON A DREAM

form.net.au/lighting-the-sound

[f](#) [@](#) [in](#) [@formwa](#)

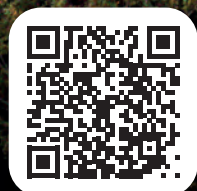
Image Credit:
Savage Beauty, Kari Kola, Connemara, County
Galway, Ireland, 2020. Photograph courtesy of
the artist.



GREAT SOUTHERN

A realm of rugged beauty and grandeur, rippling with rich history and legend. Ancient mountains shrouded in mist, cliffs carved by wild swells, and lazy coastal hamlets with not a soul around. Further inland, forests of Tingle, Jarrah, and Karri rise like cathedrals, their canopies creating dappled sunlight shadow play on every hike. And then there's the mountain ranges - dotted with wildflowers and surrounded by vineyards. Picture-worthy moments wherever you look. Tables brim with edible delights from sea and soil, as well as champion grapes pressed by generations of the same family. To wander here is to slip into a waking dream, so perfectly wild.

📌 @discovergreatsouthern & @greatsoutherntreasures



SCAN TO LEARN MORE



KATANNING

📍 @visitkatanning

Wrapped in golden canola and salmon-coloured salt lakes, Katanning unfurls like a living canvas beneath the open sky. Slip into country life, where murals bloom across laneways, market days carry the scent of fresh bread, and nights are for stargazing. Once the hum of the industrial town, the Premier Mill Hotel now breathes with quiet elegance and a superb underground bar. Beyond town, Lake Ewlyamartup glimmers, the perfect place for a late afternoon picnic. Farm stays are medicine for the soul out here.

KOJONUP

A melody of blooms and bygone eras, Kojonup is the sweetest kind of tune. Part cultural rhythm, part wildflower serenade, part quiet country heartbeat. Wander through the Kodja Place Cultural Centre, where Noongar voices share stories that reach across generations. Walk trails winding past hillsides brushed with orchids and everlastings. Or watch sheep graze rolling paddocks and homesteads glow in the afternoon light. It's not just an echo you hear – it's a call to experience life the rural way.

FRANKLAND RIVER

Vineyards unfurl across valleys like ribbons catching the light. This is wine country at its most serene - cool nights, warm days, and gentle hands coaxing grapes into champion blends. Cellar doors are tucked into farmland, where vintages carry the whispered stories of ancient soils. Pair them with olives and fruits, grown under the same sky.

CRANBROOK

Resting at the foot of the imposing Stirling Range (Koi Kyenunu-ruff), here pink lakes shimmer in the light of summer dusk, and winter brings a patchwork of gold and green pastures. This is a town steeped in quiet tradition, where culture and country entwine. Whether watching mountain silhouettes, more than 100 different bird species, or wildflowers in bloom, your options are as wide open as the horizon.

MOUNT BARKER

📍 @mountain_country_wa

Wild peaks, captivating heritage, timeless beauty. Spend mornings on mountainous hikes and rambling trails, and afternoons lounging at the Mount Barker Country Bakery, gazing through cabinets of prizeworthy pies, cakes and sweet treats. Family-owned vines curated over generations create sumptuous wines, perfect to pair with a hard-earned dinner. Just in time too, as constellations twinkle in the sky above.

PORONGURUP

A view billions of years in the making awaits. Here, peaks dissolve into mist, wildflowers burn bright like embers and clouds feel as if they could slip right through your fingertips. At the Granite Skywalk, brave the boulders and a vertical ladder to unlock dreamy views. Stay close by and as it turns dark watch the sky unveil its galaxies like scattered diamonds. In town, there's rustic pubs, homely cafes, and the taste of wines from mountain-fed waters. The lands might be ancient, but the joy is always new.

NORNALUP & PEACEFUL BAY

Welcome to a place where the forest hugs the sea and time slows down. Wander through the towering stillness of the Walpole-Nornalup National Park, the Tingle trees your guide and the air thick with their age-old wisdom. Canoe, kayak, hike – there's no shortage of adventure. By the coast, Peaceful Bay waits with its old-world charm. Caravan parks from your childhood, fishing boats bobbing in aquamarine waves, and the best fish and chips to ever grace your lips. We promise.

DENMARK | KOORABUP

📍 @discoverdenmarkwa

Dreams take root in earth and ocean. Wander among mammoth Tingle trees at the nearby Valley of the Giants Tree Top Walk, the platform below you swaying gently. Wander down to Greens Pool, Elephant Rocks, and Madfish Bay, their turquoise waters lapping against ancient granite. Or see the world from on-high, atop Monkey Rock, your view stretching ever onwards from William Bay National Park past the Nullaki Peninsula. In town, cellar doors and studios open like treasure chests, offering handmade wonders.

ALBANY | KINJARLING

📍 @amazingalbanywa

From whales to war, Albany is where history and wild wonder converge. Stand on the edge of the world at The Gap, suspended between sky and surging seas below. To your right, whales breach and play, and to the left, Bald Head Trail stretches out across vast headlands. The stories are plentiful here, tucked into pearl white coves, craggy cliffs, and aqua lagoons. Stand in remembrance at the National ANZAC Centre, the legend of our soldiers stirring a solemn tide within. And when the sun sets, you'll see why this place is an anchor - always drawing you back in.

BREMER BAY

At the far reaches of the region, Bremer Bay is a secret kept by the sea. The sand is soft, the surf is rolling, and the ocean is a canvas for unbelievable sunsets. In summer, board a boat to deeper waters to witness a spectacle like no other – orcas gathering in Bremer Canyon. Watch them slice through waves, frolic playfully, and hunt down their next meal. Onshore, spend time in the gentle sunshine, combing calm coves and turquoise pools for treasures. And as night falls the Milky Way rises to say hello, the universe close enough to touch.

TOP 5 THINGS TO DO IN THE GREAT SOUTHERN REGION

1 Wander with the wild on one of the many breathtaking hikes the Great Southern has to offer. Challenge yourself with the steep ascent of Bluff Knoll, watch waves crash against cliffs on the Bald Head Trail, take in panoramic views from the Castle Rock Granite Skywalk, and admire where rolling farmland meets the ocean atop Monkey Rock.

2 In spring, embrace the season of renewal as the land bursts to life with colour, dotted with wildflowers and fields of canola. Look out for native Orchids, Everlastings, and Banksias in places like Torndirrup National Park and Stirling Range National Park, where they bloom in abundance, making spotting them a delightful and rewarding activity.

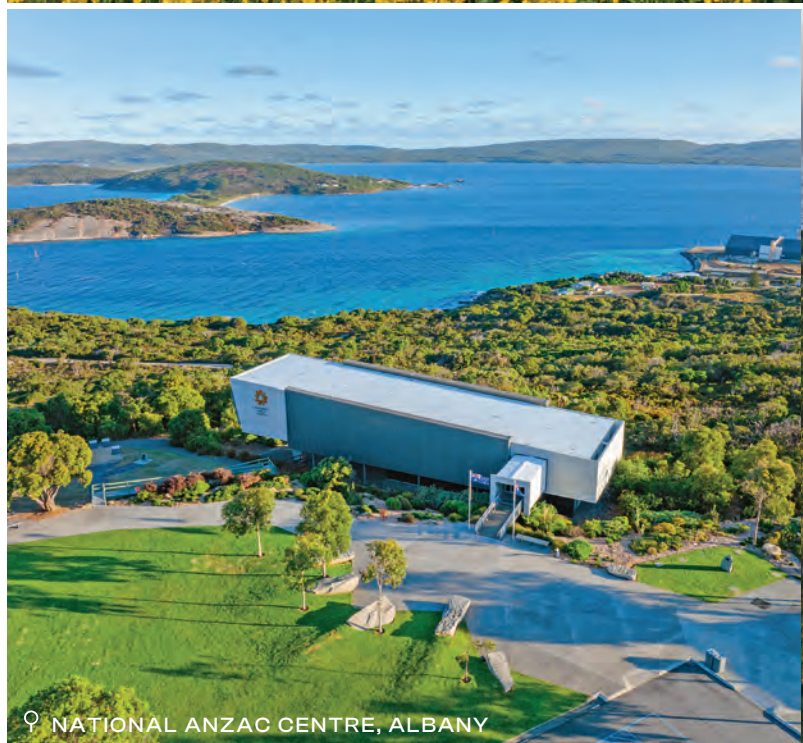
3 Step back in time in Albany, a town rich with history and heritage. Visit the National ANZAC Centre to hear powerful stories of wartime courage and sacrifice, gaining insight into the experiences of Australian soldiers. Then explore Albany's Historic Whaling Station, where you can learn about the region's maritime past, the whaling industry, and its significance to the local community.

4 Between May and September, Southern Right whales gather to calve and humpbacks migrate north, often spotted from Albany, Middleton Beach, and the rugged Torndirrup Peninsula. From December to early April, the Bremer Canyon stirs with orcas, breaching and gliding through the deep blue. Join a deep-sea expedition for a day you'll long remember!

5 Unplug, unwind, and recharge in one of the many cosy tiny cabins scattered throughout the region. Wake to birdsong in the surrounding forests, curl up with a book by the fire, take a refreshing plunge in nearby oceans, and watch dazzling sunsets for the ultimate escape.



♀ EMU IN CANOLA, STIRLING RANGE NATIONAL PARK



♀ NATIONAL ANZAC CENTRE, ALBANY



♀ HEYSCAPE TINY CABINS, DENMARK



♀ ELEPHANT ROCKS, DENMARK



♀ BALD HEAD TRAIL, ALBANY



♀ ORCA, BREMER BAY



VISITOR SERVICING IN THE GREAT SOUTHERN

Albany Visitor Centre

221 York St, Albany
Tel: (08) 6820 3700
amazingalbany.com.au

Denmark Visitor Centre

73 South Coast Hwy, Denmark
Tel: (08) 9848 2648
denmark.com.au

Note: centre is closing 30 June 2026

Katanning Business and Community Hub

74 Austral Tce, Katanning
Tel: 0477 493 141
katanning.com.au

Kojonup Visitor Centre

Located within The Kodja Place,
143 Albany Hwy, Kojonup
Tel: (08) 9831 0500
kodjaplace.com.au

Mount Barker Visitor Centre

6/622 Albany Hwy, Mount Barker
Tel: (08) 9851 1163
mountbarkerwa.com.au

Yongergnow Australian Malleefowl Centre

Lot 260 Jaekel St, Ongerup
Tel: (08) 9828 2325
yongergnow.com.au/centre

*In the towns of Bremer Bay, Frankland River,
Gnowangerup, Jerramungup, Pingrup and
Tambellup, visitor centre information is available
at the local Community Resource Centre.*






BIG4 Emu Beach Holiday Park
 8 Medcalf Parade, Albany WA 6330
 Ph: (08) 9844-1147
 E: info@big4emubeach.com.au
 W: www.big4emubeach.com.au

The ultimate coastal escape on shady beachside grounds giving direct access to Emu Beach for a relaxed seaside getaway. Accommodation and sites for every traveller and facilities to make your eyes light up from splash park to jumping pillows, playground to mini golf and family bathroom facilities for campers. Create unforgettable memories where relaxation and adventure go hand in hand.


BIG4 Emu Beach Holiday Park
 @big4emubeachhp @big4emubeach

ALBANY

Acclaim HOLIDAY PARKS
Albany HOLIDAY PARK

ACCLAIM CARAVAN & CAMPING CLUB
 SAVE UP TO 20%

Conveniently located on Albany Highway this secure park is your base for all attractions in Albany. The park boasts easy access with pet-friendly powered sites, plenty of camping spots, room for the kids in the playground and open space. Wide range of accommodation options.



550 Albany Hwy, Milpara, ALBANY WA 6330
 T: 08 9841 7800 M: 0458 688 398
 Email: albanyholiday@acclaimparks.com.au
www.acclaimparks.com.au

Quality Tourism Business

Historic Whaling Station • Australian Wildlife • Wildflower Garden





Experience Western Australia's GOLD award winning Tourist Attraction!

Open daily 9am - 5pm (Closed 25 Dec)
 81 Whaling Station Road, Torndirrup WA
 P: (08) 9844 4021 | discoverybay.com.au

ALBANY'S HISTORIC WHALING STATION
 AT DISCOVERY BAY

ALBANY

Acclaim HOLIDAY PARKS
Rose Gardens BEACHSIDE HOLIDAY PARK

ACCLAIM CARAVAN & CAMPING CLUB
 SAVE UP TO 20%

Relax to the Sights and Sounds of the Ocean

Beachfront caravan park in natural parkland setting on the shores of beautiful King George Sound and Emu Point. The spacious, air-conditioned ocean-view villas offer breathtaking views, whilst the pet-friendly caravan sites and camping areas offer shade and tranquility. Close to tennis courts, lawn bowls and golf course.



45 Mermaid Avenue, Emu Point, ALBANY WA 6330
 T: 08 9844 1868 M: 0498 698 868
 Email: rosegardens@acclaimparks.com.au
www.acclaimparks.com.au

G'DAY PARKS

WAM MUSEUM OF THE GREAT SOUTHERN

Hoist the sails of curiosity in the Great Southern

Free entry | Open daily | 10am – 4pm
museum.wa.gov.au/greatsouthern




Bremer Bay Beaches
Resort Tourist Park

Surrounded by spectacular, pristine beaches



Self-contained Family/Spa Chalets
Ensuite Cabins
Ensuite Caravan Sites
Caravan & Tent Sites
New Pool/Spa Wader
Camp Kitchen & Kiosk
Pet Friendly*

333 Wellstead Road, Bremer Bay
08 9837 4290
frontoffice@bremerbaybeaches.com.au
bremerbaybeaches.com.au

Chines
SPA RETREAT

Luxury Accommodation & Day Spa




467 Mount Shadforth Road
Denmark, Western Australia
+61 (8) 9848 2255




albany tours


- History •Wildness
- Food & Wine
- Full and half day tours from Albany



0418 414 425
albanytours.com.au

THE DREAM COLLECTIVE
WESTERN AUSTRALIA


NATIONAL ANZAC CENTRE



OPEN DAILY 9AM - 5PM

67 Forts Road, Mount Clarence, Albany
(08) 6820 3500
www.nationalanzaccentre.com.au

Albany Holiday Units



- Middleton Beach Albany WA -
www.albanyholidayunits.com.au
e: info@albanyholidayunits.com.au p: 9841 7817

Cheynes Beach
caravan park

Take a deep breath,
you're in Paradise!

Fabulous Caravan Park on
the Amazing South Coast

12 Bald Island Road, Cheynes ☎ 08 9846 1247
reception@cheynesbeachcp.au
cheynesbeachcaravanpark.com.au
Cheynes Beach Caravan Park

PEACEFUL BAY CARAVAN PARK



- 100m from the beach
- Pet friendly all year
- Fish & Chips, Cafe, Convenience Store, & Souvenirs

10 East Ave, Peaceful Bay
Phone 08 9840 8060
peacefulbaywa.com.au



VANGUARD PUBLISHING

For advertising enquiries,
contact Vanguard Publishing today.
natalie@vanguardpublishing.com.au
0426 752 352

**Escape to the tranquility of
Denmark's hidden gem!**



Brand new cabins | Studio suites
Ensuite caravan sites
Stunning views

karriauratp.com.au



*Formerly Karri Aura Tourist Park

Emu Beach CHALETs



Affordable, airconditioned, self-contained,
1, 2 and 3 bedroom apartments.
90m from the beach and
surrounded by natural bushland.
★★★ & pet friendly

Phone 08 9844 8889
admin@emubeachchalets.com.au
emubeachchalets.com.au



EMU POINT
MOTEL & APARTMENTS



Executive Suite Room

Spacious motel, deluxe and
executive studios. Budget and
upmarket rooms available.
Mini kitchens • 200m from
the beach and surrounded
by natural bushland.
★★★★

Phone 08 9844 1001
info@emupointmotel.com.au
emupointmotel.com.au

Denmark Chocolate COMPANY

Handmade Chocolates
Beer, Wine, Port & Liqueur Pairing
Hot Chocolate & Coffee
Chocolate Timeline Garden Walk

www.denmarkchocolate.com.au



Engage all your senses at the
Denmark Chocolate Company

0416 241 000
hello@denmarkchocolate.com.au
2023 South Coast Hwy, WA 6333

WineTreeEstate CHALETs

Where
Luxury
Embraces
Nature



Escape. Indulge. Unwind.

Find Us

Denmark Chocolate Company

Immerse yourself in pure tranquility at Wine Tree Estate Chalets, nestled within the serene grounds of the Denmark Chocolate Company, just nine kilometres west of Denmark.

Contact Us

Christine 0416 241 000
bookings@winetreeestate.com.au
www.winetreeestate.com.au



Mt TRIO

BUSH CAMP & CARAVAN PARK

Stirling Range, Great Southern
Western Australia



4850 Salt River Road,
Stirling Range National Park, WA

mttrio.com.au

mttriomusicmuster.com.au

enquiries@mttrio.com.au

0499 714 704



SOAP & SKINCARE | GOURMET FOOD | EXPERIENCES

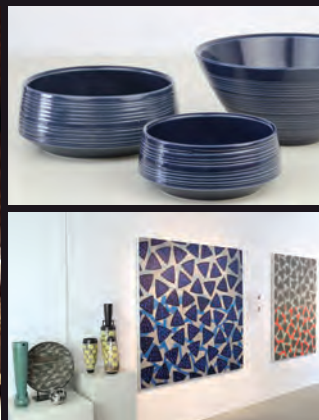
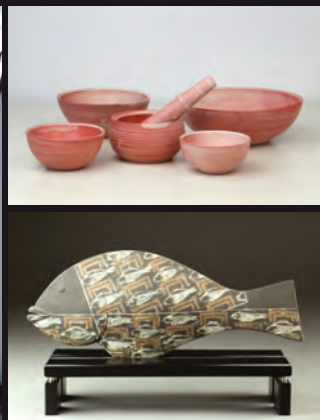


VASSE VIRGIN

RETAIL STORE

Unit 5, 10 Mount Shadforth Road, Denmark WA

www.vassevirgin.com.au



AUSTRALIA'S LARGEST SHOWCASE
OF WHEEL THROWN, FUNCTIONAL AND
DECORATIVE STONEWARE POTTERY.

OPENING HOURS: Mon- Fri: 10am-5pm. Weekends: 12-4pm.
New Studio and Gallery at 109 Lantzke Rd
off Redman Rd, Denmark. Contact: 0481 099 125
www.jonathanhook.com @ [jonathanhookceramics](https://www.instagram.com/jonathanhookceramics)

hook
jonathan



WAKE UP TO THE BIGGER PICTURE



Reframe your relaxation at an off-grid
Heyscape cabin in Denmark.
Stay on a regenerative farm, far from ordinary.

 **HEYSCAPE**





**CHOOSE YOUR PASS
CHOOSE YOUR ADVENTURE**

ALBANY VISITOR CENTRE

Visit the **Albany Visitor Centre** for:

- Accommodation Bookings
- Tour & Ticket Sales
- Local Souvenirs & Gifts
- Tourist Maps & Information
- WA National Park Passes
- Virtual Reality Experience
- Regional Holiday Planners

And to purchase your **Great Southern Flexi Pass** to save on local attractions and experiences.

221 York Street, Albany, WA 6330
Mon to Fri 9am - 4pm, Sat & Sun 10am - 2pm
Public Holidays 10am - 2pm, Closed Christmas Day

P: (08) 6820 3700 | E: stay@amazingalbany.com.au
W: amazingalbany.com.au | f@: [amazingalbanywa](https://www.facebook.com/amazingalbanywa)

2026 EVENTS

Australia's South West is alive with events all year round, from world-class food festivals and thrilling sporting competitions, to vibrant celebrations of culture and heritage. Dance at iconic music festivals, savour gourmet long lunches, and witness wildflowers burst into bloom. There's something for everyone!



SCAN TO LEARN MORE



TASTE GREAT SOUTHERN

YEAR ROUND

Albany 2026

Celebrate 200 years of Albany with a year-long calendar of cultural events grounded in reflection and connection.

JANUARY

Festival of Busselton

A free, month-long festival of family fun on Busselton's stunning foreshore.

JANUARY 22 – JANUARY 25

2026 Australian Open Water Championships and OceanSwim Festival

Feel the thrill as elite swimmers race through the crystal-clear waters of Bunbury's Koombana Bay.

JANUARY 23 – JANUARY 26

Bunbury Fringe

A bold celebration of cutting-edge art, music and performance from Australia and beyond.

FEBRUARY*

South West Multicultural Festival

Experience global music, food and culture while celebrating Bunbury's rich diversity.

FEBRUARY 7 – FEBRUARY 8

Busselton Jetty Swim

Swim, cheer or celebrate at the iconic Busselton Jetty Swim, a premier open water swimming event.

FEBRUARY 13 – FEBRUARY 15

Boyup Brook Country Music Muster

Celebrate live country music, camp under the gums, and spectate the famous ute and truck parade.

FEBRUARY 21

Bunuru Festival

Celebrate Wadandi culture through music, art and dance in the Margaret River Region.

FEBRUARY 27 – MARCH 2

Nannup Music Festival

A weekend of discovery featuring eclectic live acts, stunning scenery and one of Australia's top music events.

FEBRUARY 28 – MARCH 1

Beerfarm Rodeo

Saddle up for a weekend of rodeo action, live music and beer in the Margaret River Region.

FEBRUARY 28 – MARCH 2

Dunsborough Arts Festival

Discover art, music and sculpture coastal-side during a lively weekend festival in Dunsborough.

MARCH 1 – MARCH 2

Tarmac Albany Sprints

Feel the adrenaline of high-speed tarmac sprints along Albany's iconic coastline and historic streets.

MARCH 5 – MARCH 8

Taste Great Southern

Experience the Great Southern's finest food and wine, inspired by its wild landscapes and local produce.

MARCH 6 – MARCH 8

Harvey Harvest Festival

Celebrate harvest with fresh produce, family fun and Harvey's famous grape-stomping championships

MARCH 14 – MARCH 15

RAC Karri Valley Triathlon

A unique triathlon amidst karri trees and lake surrounds, challenging and beautiful in equal measure.

MARCH 20 – MARCH 21

Katanning Harmony Festival

Experience a colourful fusion of world tastes, music and community spirit in Katanning town centre.

MARCH 28 – MARCH 29

XTerra Dunsborough

Off-road triathlon and trail runs through Dunsborough's turquoise bays and wild forest tracks.

MARCH 28 – APRIL 6

Blackwood River Arts Trail

Explore creative studios, hidden galleries and interactive art experiences in scenic along the Blackwood River.

APRIL*

Balingup Small Farm Field Day

Explore sustainable small-farm life with animals, produce, machinery and ideas for every backyard.

APRIL 4

Donnybrook Apple Festival

Donnybrook's beloved apple-themed street festival: fresh produce, parades and regional colour.

APRIL 12 – APRIL 14

3 Waters Running Festival

From the ocean to the inlet, runners and supporters unite for a vibrant Bunbury running festival.

APRIL 17 – APRIL 19

Northcliffe Karri Cup MTB Challenge

Ride or spectate at one of WA's longest-running mountain bike events among towering karri trees.

APRIL 17 – APRIL 27

Margaret River Pro

Watch the world's top surfers tackle massive waves and raw coastal power at this elite sporting event.

APRIL 18

South West Craft Beer Festival

Sip the South West's best local brews amidst the stunning Margaret River Region backdrop.

APRIL 18 – APRIL 26

Southern Forests & Valleys Heritage Festival

Explore history, culture and place through heritage walks, workshops and talks across the forest towns.

APRIL 25

ANZAC Day Albany

A solemn remembrance of those who served in World War One, held where many began their journey - Albany.

MAY 1 – MAY 3

Busselton Festival of Triathlon

From first-timers to finish-line fans, take on Busselton's premier swim-bike-run challenge.

MAY 2 – MAY 3

Festival of Country Gardens: Autumn

Discover open gardens, workshops and vibrant seasonal displays across the Southern Forests & Valleys during autumn.

MAY 9 – MAY 10

Margaret River Ultra Marathon

An epic 80km journey, solo or in teams, through forests, beaches and vineyards of the Margaret River Region.

MAY 15 – MAY 17

Margaret River Readers and Writers Festival

Meet authors, thinkers and readers for bold conversations, workshops, panel discussions and special events in Margaret River.

MAY 16

SEVEN Gravel Race

Bringing riders from around the world to conquer seven epic gravel sectors through Nannup's wild terrain.

MAY 22 – MAY 24

Forest Rally

Watch the dust fly as rally drivers battle it out through Nannup's winding forest roads.

JUNE – AUGUST

Fridgetown Fest

Warm up your winter: art, music, food and outdoor thrills across Bridgetown's three-month festival.

JUNE 6

AFL North Melbourne vs Fremantle Dockers Fixtures

Catch high-stakes AFL action as the Kangaroos take on Fremantle in Bunbury's vibrant sporting hub.

JUNE 6 – JUNE 7

Albany Classic 'Around the Houses'

Classic cars roar through Albany's streets in a historic weekend of high-octane motor sport.

JULY

Albany Maritime Festival

Dive into Albany's maritime history with art, music, food and family events by the sea.

JULY 5 – JULY 12

NAIDOC Week

A week of reflection, celebration and connection with First Nations culture across Australia's South West.

JULY 17 – JULY 26

Cabin Fever

Warm up winter in the Margaret River Region with decadent feasts, local wines and fireside festivities.

AUGUST 7 – AUGUST 16

Nannup Flower and Garden Festival

Stroll among tulips, explore workshops and experience Nannup's blooming festival of gardens.

AUGUST 22 – AUGUST 23

Balingup Medieval Carnivale

Step into medieval magic with jousts, parades, fire-shows and artisan markets in Balingup.

AUGUST 29 – SEPTEMBER 6

CinefestOZ Film Festival

Celebrate film-making excellence with premieres, filmmaker talks and immersive cinema-experiences in the Bunbury and Margaret River Region.

SEPTEMBER*

Harvey Region Heritage Festival

Discover local heritage, hands-on workshops and regional flavours in the heart of the Harvey Region.

SEPTEMBER 7 – SEPTEMBER 20

South West Japan Festival

Immerse yourself in Japanese culture with performances, workshops, lanterns and food across Bunbury and the South West.

SEPTEMBER 12 – SEPTEMBER 27

Margaret River Region Open Studios

Experience Australia's largest open-studios event, where the Margaret River Region's artists open their doors to you.

SEPTEMBER 12 – OCTOBER 11

Bloom Festival

The Great Southern Treasures come alive each spring with wildflower trails, local art, fresh produce and community celebrations.

SEPTEMBER 26 – OCTOBER 11

Southern Art and Craft Trail

Journey through the Southern Forests & Valleys and Great Southern for a regional art and craft adventure.

OCTOBER*

Coastrek Margaret River

Trek 20 km or 35 km along the iconic coast of the Margaret River Region for fitness, friends and charity.

OCTOBER*

Mountain Country Music Muster

Country music, bush camping and good mates beneath the Stirling Ranges at Mt Trio Bush Camp.

OCTOBER 3 – OCTOBER 11

UCI Gravel World Championships & G7 Festival of Gravel

Global athletes and gravel enthusiasts unite in Nannup for the ultimate championship and festival of gravel racing.

OCTOBER 10

Dardanup Bull and Barrel Festival

Discover over 150 market stalls, farm animals, live entertainment and a spectacular fire-sculpture burn-out finale.

OCTOBER 15 – OCTOBER 18

Cape to Cape MTB

An unforgettable mountain-biking adventure linking forests, coast and wineries from Cape Leeuwin to Cape Naturaliste in the Margaret River Region.

OCTOBER 15 – OCTOBER 18

Lost & Found Festival

Lose yourself in food, wine, art and music across the Bunbury Geopraphe region.

OCTOBER 17 – OCTOBER 18

True Grit WA

Push your limits on a mud-soaked obstacle course built for grit, guts and glory.

OCTOBER 24 – OCTOBER 25

Northcliffe Bee Festival

The inaugural Northcliffe Bee Festival brings bees, art, food and sustainability together in one buzzing weekend.

OCTOBER 29 – NOVEMBER 1

Festival of Country Gardens: Spring

Tour blooming country gardens, meet passionate growers and enjoy spring events across the Southern Forests & Valleys.

OCTOBER 30 – OCTOBER 31

Harvey Dickson Rodeo

An action-packed weekend of rodeo tradition, live entertainment and true outback energy near Boyup Brook.

NOVEMBER*

Pair'd Margaret River

A premier wine, food and music festival showcasing world-class chefs and winemakers in the Margaret River Region.

NOVEMBER*

Geo Bay Cool Water Classic

Join swimmers and spectators for a 20 km ocean journey from Dunsborough to Busselton Jetty through pristine Geopraphe Bay.

NOVEMBER*

Run Bibbulmun Track Stage Run

A three-day solo trail run along the Bibbulmun Track through the Great Southern's forests and wild coast.

NOVEMBER 7

Pemberton Avocado Festival

From orchard to plate, celebrate avocados, local produce and regional in Pemberton.

NOVEMBER 13 – NOVEMBER 15

Blues at Bridgetown

Soak up three days of blues, roots and street-party spirit in Bridgetown's Blackwood Valley.

DECEMBER 6

Ironman WA

A world-class triathlon event where athletes of all levels take on Busselton's scenic coastal course.

DECEMBER 12

Manjimup Cherry Harmony Festival

Taste, explore and celebrate Manjimup's famous cherry season with parades, markets and orchard experiences and celebrate 25 years of Cherry Harmony!

**Dates yet to be confirmed, please check our website for the most up-to-date information.*

PLAN YOUR EVENT

Whether you're dreaming of the perfect wedding, planning a one-of-a-kind conference, or searching for an unforgettable event setting, Australia's South West has it all.

Discover a region brimming with stunning locations and exceptional venues, ready to bring your vision to life beyond your wildest dreams.

Visit australiassouthwest.com/plan-your-event to start planning today.

ADVENTURE

Untamed moments. Untread tracks. Unspoiled beaches. Wander coastal cliffs with whales as neighbours and cycle forest tracks until rhythm becomes meditation. Adventure here is about getting wild, hiking to the treetops, the rugged clifftops, to the heavens themselves. Where you catch your breath only for the vista to take it away again. Wake with sunrise and the perfect wave – the kind surfers cross the globe to find. Glide over secret glassy inlets, dive into impossible aquamarine seas, paddle around a bend, and another, and another. The wander might eventually come to an end... but the dream never does.

♀ BLUFF KNOLL, STIRLING RANGE NATIONAL PARK



SCAN TO LEARN MORE

ROPE COURSES

A rope anchoring you, the wind blowing in your face, and the ground a long way down... Enjoy adrenaline filled adventures among the Tuart trees with Forest Adventures, just outside Busselton. Or further south, tackle the ropes and ziplines at Aerial Adventure Pemberton, with junior and adult options available.



♀ AERIAL ADVENTURE PEMBERTON

CYCLING & MOUNTAIN BIKING

From crunchy gravel to dirt paths that cut through towering Karri trees, there's an outstanding network of cycling trails on offer in the South West. Bike hire and guided e-bike tours are available with companies such as Adventure Connections.

- Arklow Trail Network, Collie
- Giants Trails, Walpole and Nornalup
- Mount Clarence, Albany
- Munda Biddi Trail, Perth to Albany
- Old Timberline Trail, Nannup
- Pemberton Mountain Bike Park, Pemberton
- Sidings Rail Trail, Nannup
- Tank 7, Nannup
- The Pines, Margaret River
- Wadandi Track, Margaret River
- Wambenger Trails, Collie

Visit trails.wa.gov.au for more South West mountain biking and cycling trails and maps.



♀ MARGARET RIVER REGION



♀ DIVING, BUSSELTON JETTY

DIVING & SNORKELLING

Underwater worlds await, full of glistening sunlight reflecting off fish scales and reefs teeming with coral. With both the Indian and the Southern Oceans colliding off the coast, the mixture of waters makes for extraordinary exploration.

4 Mile Reef, Busselton

An 18m deep reef just a short boat ride from the marina, boasting stunning coral and open ocean views.

Busselton Jetty, Busselton

Home to over 300 species of marine life and a dazzling underwater sculpture trail.

Greens Pool, Denmark

Crystal clear waters in a calm bay, perfect for beginner snorkellers, and brimming with wildlife.

Shipwrecks, Bunbury to Albany

Explore Bunbury's 'The Lena', sunk in 2002 some 18 metres deep, Dunsborough's 'The Swan', a former HMAS destroyer, scuttled in 1997 that rests between 6m and 31m, or 'The Perth' in Albany, a decommissioned 133m guided missile destroyer, bearing scars from the Vietnam War.

Yallingup Lagoon, Margaret River

Sheltered from coastal winds, the lagoon is ideal for beginner to expert snorkellers.

FISHING

Since the early days of the Noongar people, the ocean and waterways of the South West have provided excellent fishing.

More than 1000kms of coastline offer opportunities to catch abalone, bluefin tuna, cod, crab, dhufish, groper, herring, rock lobster (crayfish), salmon (ngari), samson, skippy, snapper, squid, and tailor. While the rivers and dams are bursting with bream, flathead, marron (during season), rainbow trout, redfin perch, and whiting. You need a WA fishing license to catch freshwater fish and marron, as well as fish from a boat, which you can obtain at fish.wa.gov.au.

FUN PARKS & PLAYGROUNDS

Dreaming of having a quiet moment while the little ones run wild? The South West is full of free-entry fun parks, playgrounds, and skate parks.

Donnybrook Apple Fun Park, Donnybrook

The biggest free fun park in the Southern Hemisphere, with 10-metre slides, swings, rocking horses, and climbing frames.

Manjimup Heritage Park Adventure Playground, Manjimup

Brave the 17-metre slide, 40-metre flying fox, climbing towers, and swings.

All Ages Playground, Katanning

A playground for young and old featuring seesaws, spinners, tunnels, a 30-metre flying fox, and 10-metre slide.

Koolambidi Woola Youth Precinct, Bunbury

Great for kids of all ages, the precinct boasts a sport court, parkour area, mini golf, beach climbing net, skate bowl and more.

Play On The Bay, Busselton

A nautically-themed adventure playground, located on the Busselton Foreshore. A giant side-turned boat is great for climbing, with water sections for summer.

HIKING

Forests at your feet, mountains rising above you, the ocean on the horizon. South West views don't get much better than these hikes.

Bald Head Trail, Torndirrup National Park

One of the best views in all of Albany. A 12.5km return hike across the Flinders Peninsula featuring steep terrain, granite slopes, and boardwalks.

Bluff Knoll | Bular Mial, Stirling Range National Park

The highest peak in the South West, coming in at 1,099m. This behemoth is best tackled at sunrise or in winter for the chance to see snow.

Granite Skywalk, Porongurups

A steep 3km-return walk trail through the dreamy forests of the Porongurup National Park. Panoramic views from the 38m-high lookout awaits.

Monkey Rock, Denmark

A relatively easy 2km beginner hike to the granite summit. Take in the vista of the Nullaki Peninsula to Lights Beach and beyond.

Mount Chudalup, Northcliffe

Steep in places, this 2km walk takes you 185m high to the top of a granite outcrop in D'Entrecasteaux National Park. Gaze out over a sea of Karri and Marri trees.

Valley of the Giants Tree Top Walk

Nestled between Walpole and Denmark, this disabled access walk rises 40m above the forest floor. Be prepared for the platform to sway slightly in the breeze, just like the trees!



♀ VALLEY OF THE GIANTS, TINGLEDAL



BEST BEACHES

♀ LITTLE BEACH, ALBANY

BLOSSOMS BEACH, BREMER BAY

Crystal clear water and squeaky white sand. Perfect for swimming.

BUNKER BAY, DUNSBOROUGH

A tranquil little cove, picture-perfect with brilliant white sand and some of the clearest water in the country. A swimmer's delight.

GEOGRAPHE BAY, BUSSELTON

Close to the Busselton Jetty, cafés and picnic facilities. Ideal for a beach day for the whole family.

GNARABUP BEACH, MARGARET RIVER

Tucked away in a protected bay and dog friendly. Popular with early morning swimmers and those with furry friends.

GREENS POOL, DENMARK

A shallow cove, boasting mint-green waters that are cool in winter and dreamy in summer. Swim, stand-up-paddleboard, or enjoy a spot of snorkelling.

KOOMBANA BAY, BUNBURY

Disabled access and frequented by friendly dolphins, especially on summer mornings. Nearby cafes and kids playgrounds make it very family friendly.

LITTLE BEACH, NEAR ALBANY

Crisp white sand and world-famous granite boulders decorated with orange lichen. Swells can be big some days so it's best for more experienced aquatic enthusiasts.

MEELUP BEACH, NEAR DUNSBOROUGH

Calm shallow waters, shady grass hangouts, and barbeque facilities. This spot is perfect for dreamy seaside afternoons.

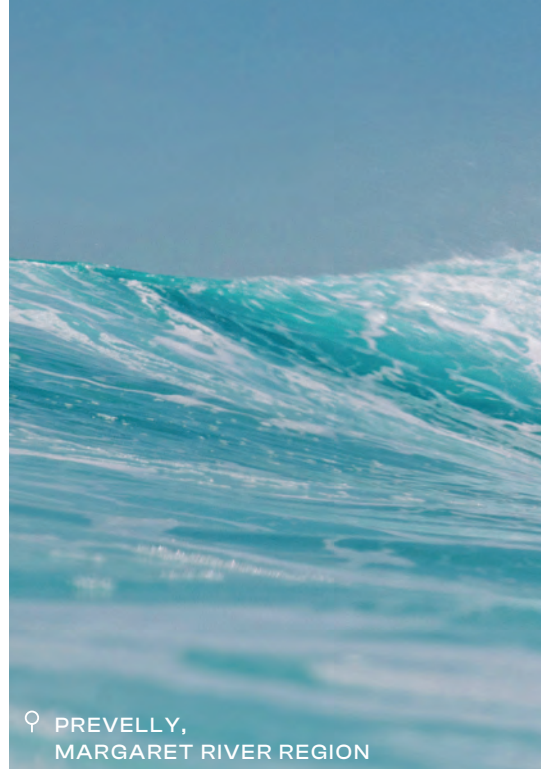
MIDDLETON BEACH, ALBANY

A family oasis, featuring calm waters, BBQs and ocean pool lanes during summer. A new artificial reef further down the beach also makes for great beginner waves.

SMITHS BEACH, YALLINGUP

A long stretch of coastline, hugged by water and roaring swells. Grab the surfboard and sunnies for a lovely day out.

Australian beaches are some of the best in the world and hard to resist! But please take a moment to learn about rip currents and coastal dangers at mybeach.com.au. Find out which beaches are patrolled by Surf Life Saving Australia at beachsafe.org.au or visit sls.com.au. You can check tide times online at willyweather.com.au.



♀ PREVELLY,
MARGARET RIVER REGION

MAZES

From a half hectare hedge maze to a labyrinth grown from native and exotic shrubs – spend hours unlocking the mysteries of the region's a-maze-ing attractions with friends and family.

- A Maze'n, Margaret River
- Boranup Forest Maze, Karridale
- Denmark Maze, Denmark
- Yallingup Maze, Yallingup

PADDLING

With calm waters in summer and full banks ready for adventure-seekers each winter, the South West offers plenty of waterways flowing with fun.

Blackwood River, Southern Forests & Valleys

The largest river in the South West, snaking through Boyup Brook, Bridgetown and Nannup, before meeting the coast in Augusta. Canoe and kayak with the whole family.

Stockton Lake / Black Diamond Lake, Collie

Old mining pits that boast the bluest (and coldest) water in Collie. Ideal for floating the day away on a stand-up paddleboard.

Walpole-Nornalup Inlet, Nornalup

Teeming with wildlife, this sanctuary is the perfect place to canoe, kayak, or pack-raft.



♀ CAPE TO CAPE TRACK, MARGARET RIVER REGION

SURFING

With more than 100 breaks along the coast, the South West has one of the most consistently surfable coastlines in the world. From groms to professionals - there's a wave to suit everyone.

Contos Beach, near Margaret River

A sheltered beach from strong Easterly winds. Best up to 1.5m swell.

Left-handers, Gracetown

Five different waves along here. Best up to 2m swell.

Main Break, Surfers Point

Home of the Margaret River Pro. Swells upwards of 4m, this one is for the experienced surfers.

Muttonbird Island, near Albany

Suitable for all surfers. A beach break you can drive on. Best up to 2.5m.

Ocean Beach, Denmark

Denmark's primary surfing beach. Good for both beginners and experts. Best up to 3m.

Smiths Beach, Yallingup

Stunning views over the reef and beach, protected from southerly winds. Best up to 2.5m.

Don't know how to surf? Take lessons with Margaret River Surf Academy. Download the SharkSmart WA app to stay alert to marine activity.

TRAILS & TRACKS

Grab your boots and chase the fading light on a multi-day hike that takes you deep into the heart of nature. In the Southwest, every trail is a doorway into a wilderness both timeless and untamed.

Bibbulmun Track

Stretching nearly 1,000km from Perth to Albany, you'll pass old growth forests, quaint farmland, rugged coastal cliffs, and remote beaches. Considered one of the world's great long-distance walk tracks.

Cape to Cape Track

Spanning 123km between Cape Naturaliste Lighthouse and Cape Leeuwin Lighthouse.

Traverse soft sand beaches, peaceful forests, and dramatic coastal heaths. A 3.7km disabled access section near Sugarloaf Rock offers options for all to enjoy.

Willman Bilya

A dedicated walking trail, stretching 87 kilometres in a loop around Collie. Pass through magnificent Yarri, Marri, and Jarrah forest, climb imposing granite outcrops, and view the sweeping Collie River.

Transfers, drop-offs and fully-guided walks are available for most multi-day hikes.

For a comprehensive list of walking trails to suit your interests and ability, visit trails.wa.com.au.

♀ MOUNT TOOLBRUNUP, STIRLING RANGE NATIONAL PARK



LEAVE ONLY FOOTPRINTS

Follow these rules to ensure our national parks and nature reserves remain places of pristine beauty.

- Leave what you find, look but do not touch Aboriginal art or disturb sites of cultural significance
- Dispose of waste properly
- Minimise campfire impacts
- Respect wildlife, flora and fauna
- Travel and camp on durable surfaces

CULTURE AND HERITAGE



SCAN TO LEARN MORE

♀ NGALANG WONGI ABORIGINAL CULTURAL TOURS, BUNBURY

ABORIGINAL OPERATORS

Boola Bidi Dreaming Centre

In Korijekup (Harvey), on Bindjareb Noongar Country, you'll find this hub of Noongar culture. From guided tours to yarnning circles, storytelling, bush food, and medicine workshops, Boola Bidi Dreaming Centre shares the lives and stories of local Aboriginal culture dating back tens of thousands of years. Join guides on a tour of Harvey Dam to discover bush plants and their uses, then return to the centre to browse the extensive retail range of Aboriginal products or learn about the importance of fire in a tool-making class.

Koomal Dreaming

Journey with Wadandi custodian Josh 'Koomal' Whiteland and uncover the secrets of saltwater Country in Yallingup. Step into Koomal Dreaming's private

Meeting Place, surrounded by storytelling art and traditional artefacts, and enjoy native foods, music, and traditional fire-lighting. Unique tours such as the Twilight Didgeridoo Cave Tour or Ngilgi Cave Cultural Tour will leave you enriched and more deeply connected to this precious Boodja (land). Take a piece of the experience home with you with Josh's 'Kaya Didgeridoo Music' CD or stunning artwork.

Kurrah Mia

No trip to Kinjarling (Albany) is complete without taking time to experience the rich Menang Noongar culture on a guided tour with Kurrah Mia. Walk in the footprints of the Menang people on a 1.5–2 hour tour and immerse yourself in a culture that is over 40,000 years old. Tours of Quaranup, the Oyster Harbour Fish Traps, and Coorndarup offer unique insights into the land, with guides sharing Dreaming stories and cultural knowledge along the way.

Ngalang Wongi Aboriginal Cultural Tours

Forget what you think you know about Goomburrup (Bunbury) and join Troy Bennell on a journey into the heart of this coastal city. A natural-born storyteller, Troy shares Dreaming tales, personal yarns, and memories of growing up with his unique passion and humour. Along the way, take in culturally significant sites, striking Aboriginal street art, and natural wonders like the 130-million-year-old basalt rocks at Wyalup Rocky Point and the serene mangroves of the inlet.

The Kodja Place

The Kodja Place shares the story of Australian country life through voices, photographs, art, and objects from Kojonup's Noongar and settler cultures. Wander the Australian Rose Maze and discover the poignant stories of the challenges women in the region faced. In



♀ KOOMAL DREAMING, YALLINGUP



♀ BOOLA BIDI DREAMING, HARVEY

the Kodj Gallery, journey from a Noongar creation story to modern farming times. End your visit at Yoondi's Mia Mia, a gathering place framed by bush shelters and wildflowers.

Yallingup Aboriginal Art

Yallingup Aboriginal Art showcases contemporary Aboriginal fine art alongside Dreamtime stories passed down for thousands of years. Visitors are invited to explore the light-filled gallery, reflect on each story, and admire works from local Noongar artists as well as those from Northern WA, the Western Desert, Central Australia, the APY Lands, and North Queensland. Constantly evolving, the gallery provides a platform for Indigenous artists to share their culture, with artworks, prints, books, jewellery, and more available to purchase.

ART GALLERIES

Australia's South West is brimming with galleries and studios showcasing lively sculptures, eye-catching paintings, unique jewellery, handwoven designs, and more, which tell the stories of acclaimed local artists.

- Boola Bidi Dreaming Centre, Harvey
- Bunbury Regional Art Gallery, Bunbury



♀ BUSSELTON CULTURAL PRECINCT

- Collie Art Gallery, Collie
- Happs Pottery, Dunsborough
- John Miller Design, Margaret River and Yallingup
- Kodj Gallery, Kojoonup
- REDSEA Art Gallery, Margaret River
- Understory Art and Nature Trail, Northcliffe
- Yallingup Aboriginal Art, Yallingup
- Margaret River Region Open Studios, Margaret River (September)
- Southern Art and Craft Trail, Southern Forests (September-October)

HISTORY

With an Indigenous history stretching back more than 50,000 years and settler heritage spanning the past few hundred, the South West is brimming with stories to uncover. Walk with traditional operators to explore sacred sites, cultural traditions, and the region's six seasons. Hear tales of wartime bravery at the National ANZAC Centre, discover the site of Western Australia's first European permanent settlements at the Museum of the Great Southern, and step back in time at Albany's Historic Whaling Station, the Bunbury Museum and Heritage Centre, Harvey internment camp, and the Busselton Cultural Precinct.

MURALS

Across brick walls and hidden laneways, Australia's South West comes alive with vibrant murals by internationally acclaimed artists. Trails wind through Bunbury, Collie, Mount Barker, and Katanning, while giant grain silos in Albany and Pingrup are must-sees. Explore solo or join a guided tour in Albany with Albany Tours or in Collie with Forest Explorers, to hear the stories behind the art. Don't miss the 8,000 sqm Wellington Dam mural, the largest dam mural in the world!

NATURE AND WILDLIFE

Moments here feel like they're carved from myth – with wildlife encounters so rare and beautiful they blur the line between dreams and waking. Watch orcas leap from cobalt ocean canyons, their sleek shadows racing beneath the waves. Spy dolphins skimming past you on your morning paddle. Hear the great migration of breaches and breaths and lullabies, singing out across the Humpback Highway. Beneath the surface, coral gardens bloom and stingrays ripple like silk across the sand. While inland, the earth tells older stories: those of the forests and caves. Stillness descends through canopies of Karri, Marri, and ancient Tingle trees, and limestone caverns echo through the ages. Here, kangaroos bound across open plains, emus stride through scrub, and rare orchids bloom. Moments where legend becomes real life.



SCAN TO LEARN MORE

♀ STINGRAY, HAMELIN BAY

CAVES

More than 150 limestone caves lie beneath the Leeuwin-Naturaliste Ridge, each a natural time capsule holding stories of the history of the South West and local Noongar people. Explore ancient fossils, underground caverns, and spectacular crystal formations.

Jewel Cave

The biggest show cave in Western Australia comprised of three massive chambers. It features one of the longest straw stalactites found in the world, measuring 580cm. Fully guided tours are available from 9am to 5pm.

Lake Cave

A dazzling decorative cave, home to the mighty 'suspended table' hanging crystal. The most actively dripping cave, it features a pristine chamber, permanent lake, and entrance through a sunken doline. Fully guided tours are available from 9am to 5pm.

Mammoth Cave

Observe the fossils of long-extinct megafauna, sparkling stalagmites, and the majestic Marri forest. Wheelchair access is available for the first chamber. Self-guided walk throughs are available from 9am to 5pm.

Ngilgi Cave

Named for a dreamtime spirit of the Wadandi people, the cave features stunning displays of stalactite, stalagmite, helictite, and shawl formations. The Ancient Lands experience brings to life the story of the creation of the land, with semi-guided and fully-guided tours available from 9am to 5pm.



♀ DOLPHIN DISCOVERY
CENTRE, BUNBURY

♀ LAKE CAVE, MARGARET RIVER REGION





♀ ALBANY'S HISTORIC WHALING STATION



♀ BORANUP FOREST, MARGARET RIVER REGION

COASTAL ATTRACTIONS

The smell of salt in the air, the wind whistling through your hair, and the call of the wild waiting. Don't pass up the opportunity to visit these coastal gems.

Albany's Historic Whaling Station

Learn about the last operating whaling station in Australia. Climb aboard the Cheynes IV - the world's only preserved whale chaser ship, view a giant blue whale skeleton, and explore the wildlife park and wildflower garden.

Busselton Jetty

The longest wooden-piled jetty in the Southern Hemisphere, stretching 1.841km out to sea. It takes roughly 20 minutes to walk or rest your feet and catch the electric solar-powered train to the end. There you'll find one of just six underwater observatories in the world.

♀ CANAL ROCKS, LEEUWIN-NATURALISTE NATIONAL PARK



Canal Rocks

Wander over the Indian Ocean along a narrow timber bridge, the ocean roaring below. Thousands of years of swells have carved out a channel between the granite rocks, stretching hundreds of metres.

The Gap and Natural Bridge

Just outside Albany, this 40m high platform places you directly over the crashing ocean waves. Wheelchair accessible, a second path also leads to the Natural Bridge - a window carved by the elements.

Lighthouses

Head up the historic Cape Leeuwin Lighthouse, the tallest lighthouse on mainland Australia and see where the Southern and Indian Oceans meet. Further north, Cape Naturaliste Lighthouse offers guided tours and breathtaking panoramic views.

Sugarloaf Rock

Rising above the ocean like a pyramid, sunset here is nothing short of spectacular. Situated within the Leeuwin-Naturaliste National Park, just outside Dunsborough.

NATURE PARKS

Rich soils, well-worn paths, and trees of every size, shape, and colour. Australia's South West is abundant in places to reconnect with nature.

Big Brook Arboretum, Pemberton

Wander among exotic trees, from sequoias to spotted gums. Nearby, the Big Brook Dam is great for swimming, or stay the night at one of the camping spots.

Boranup Karri Forest, Margaret River

An isolated forest brimming with dappled sunlight and bright wildflowers. Made up of a grove of 100-year-old Karri trees.

Golden Valley Tree Park, Balingup

Western Australia's largest arboretum, hosting trees from all over the world. A stunner all year round, but particularly during Autumn when the leaves change colour.

Tuart-Ludlow Forest, Capel

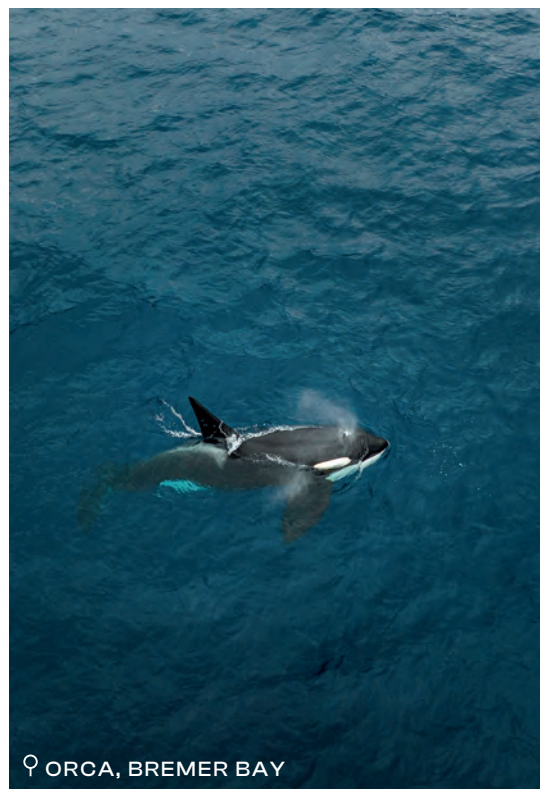
Explore paths through the largest remaining pure forest of Tuart trees in the world. Trees here get more than 33m high, and are unique to this region - only growing in a coastal limestone landscape.



♀ GOLDEN VALLEY TREE PARK, BALINGUP



♀ DOLPHINS, MARGARET RIVER REGION



♀ ORCA, BREMER BAY

MARINE LIFE

From Southern Right Whales calving off the coast, to dolphins cruising the shallows, and stingrays stopping by just to say hello, the beautiful blue waters of the South West are bursting with wildlife.

Blue, Humpback & Southern Right Whales

Between May and December, the coast comes alive with whale song as a great migration occurs. Early in the season, whales travel from Bremer Bay to Albany and Augusta, before heading northwards. While later in the season they return past Busselton and Dunsborough on their long journey back to Antarctica. Whale watching cruises depart daily (weather and season dependent) from Albany, Augusta, Busselton, and Dunsborough. Hop on board with a local operator such as All Sea Charters, Naturaliste Charters, or Whale Watch WA for an up-close experience.

Spot them from the shore at:

- Cape Leeuwin Lighthouse and Flinders Bay, Augusta
- Cape to Cape Track, Margaret River Region
- Conspicuous Cliff, Nornalup

- Ocean Beach, Denmark
- Point D'Entrecasteaux, Northcliffe
- Point Picquet, Eagle Bay
- Torndirrup National Park, Albany
- Fitzgerald River National Park, Bremer Bay

Dolphins

Pods of these playful animals can be seen up and down the coast, with sightings more likely during the warmer, summer months. Hop aboard an eco-cruise or swim tour at the Dolphin Discovery Centre in Bunbury for a guaranteed sighting.

Spot them from the shore at:

- Blackwood River and Flinders Bay, Augusta
- King George Sound, Albany
- Koombana Bay, Bunbury
- Sugarloaf Rock, Yallingup

Stingrays

Elusive but often friendly, the South West is home to a variety of species including Smooth Rays, Black Rays, and Eagle Rays.

Spot them from the shore at:

- Boat ramp and old jetty, Hamelin Bay
- Bunker Bay, Dunsborough
- Hardy Inlet, Augusta
- Yallingup Lagoon, Yallingup

Orcas

From December to April, the waters off Bremer Bay swell with families of orca. Bremer Canyon, some 50km out to sea, is home to the largest pod in the Southern Hemisphere, with more than 100 individuals identified. Charter boats depart from Bremer Bay during the season with Naturaliste Charters and Whale Watch WA, with bus transfers also available from Albany with Albany Tours.

Please remember to keep your distance from marine animals if you encounter them, as they can be unpredictable. Respect their space, and do not pet, touch, or feed them, so they can remain wild.



♀ HIGHLAND VIEW FARM,
THOMSON BROOK

WATERFALLS & WATERWAYS

Incredible aquatic experiences aren't just limited to the coast, with the region boasting stunning waterfalls, lakes, rivers, and inland pools to cool off at.

Waterfalls

- Beedelup Falls, Pemberton
- Cascades, Pemberton
- Fernhook Falls, Walpole
- Ironstone Gully Falls, Capel
- Kevill Road Waterfall, Margaret River
- Lane Poole Falls, Northcliffe
- Meekadarabee Falls, Cowaramup
- Quinninup Falls, Wilyabrup
- Waterfall Beach, Denmark

Dams, Lakes & Pools

- Barrabup Pool, Nannup
- Black Diamond Lake, Collie
- Circular Pool, Walpole
- Fonty's Pool, Manjimup
- Glenoran Pool, Manjimup
- Greenbushes Pool, Greenbushes
- Honeymoon Pool, Collie
- Lake Brockman, Harvey
- Lake Kepwari, Collie
- Lake Poorrarecup, Cranbrook
- Minningup Pool, Collie
- Pemberton Pool, Pemberton
- Stockton Lake, Collie
- Wellington Dam, Collie

To help preserve these unique natural environments, please stick to the walking trails and take all rubbish away with you. Please respect special sites by only taking photos and not altering the landscape. When travelling through remote areas, advise local park rangers, check information about closures, and pay close attention to road and weather conditions.

WILDLIFE

A sanctuary for creatures great and small, the South West is home to thousands of different species of wildlife. From shy woylies to cute kangaroos, tiny honey possums to loud red-tailed black cockatoos, every step here brings you closer to intimate encounters with the animals that have always called this ancient land home.

Wildlife Encounters

- Australian Wildlife Park, Albany
- Bunbury Wildlife Park, Bunbury
- Capes Raptor Centre, Margaret River
- Discover Deadly, Margaret River
- Denmark Animal Farm, Denmark
- Denmark Dinosaur World, Denmark
- Dolphin Discovery Centre, Bunbury
- Highland View Farm, Thomson Brook
- Sunflowers Animal Farm, Capel

WILDFLOWERS

One of just 36 biodiversity hotspots in the world, almost 80 per cent of the flora found in the South West is completely unique. From delicate Orchids to unique Banksias and Moodjar trees, there's colour all across the region.

Bunbury Geographe

- Crooked Brook Forest, Ferguson Valley
- Manea Park, Bunbury
- Wellington National Park, Collie

Margaret River

- Boranup Forest, Margaret River
- Cape to Cape Track

Southern Forests & Valleys

- D'Entrecasteaux National Park, Windy Harbour
- Heartbreak Trail, Pemberton
- Karri Forest Explorer Drive, Pemberton
- Northcliffe Forest Park, Northcliffe

Great Southern

- Myrtle Benn Reserve, Kojonup
- Porongurup National Park, Porongurup
- Stirling Range National Park, Stirling Range
- Torndirrup National Park, Albany

Picking wildflowers is illegal in the South West, with fines of up to \$2,000. Please stick to the designated paths and help preserve our native flora for future generations to enjoy.

♀ WALPOLE-NORNALUP NATIONAL PARK

NATIONAL PARKS

With 24 national parks, there's no shortage of wild, untouched landscapes to explore. Pets are not allowed in any national park. Entry fees are also required to access many of the parks, with passes available from Parks and Wildlife offices, visitor centres, and online.

See parks.dpaw.wa.gov.au for more.

D'ENTRECASTEAUX NATIONAL PARK

Pristine beauty, unspoilt beaches, rugged coastal cliffs, and towering Karri forests. Don't forget to visit Yeagarup Dunes. Fees applicable.

FITZGERALD RIVER NATIONAL PARK

A UNESCO recognised international biosphere reserve, with more than 1,800 unique species of flowering plants, lichens, mosses and fungi. Fees applicable.

PORONGURUP NATIONAL PARK

One of the most ancient landscapes in world, at more than 1.1 billion years old. Renowned for giant Karri trees and granite rock formations. Fees applicable.

STIRLING RANGE NATIONAL PARK | KOI KYEUNU-RUFF

A biodiversity hotspot home to imposing peaks. In winter, it is also one of the few places in the state where snow may fall. Fees applicable.

WALPOLE-NORNALUP NATIONAL PARK

Lookouts, landings, inland pools, clifftops, beaches, granite outcrops and treetop walks await. No fee to enter.

WELLINGTON NATIONAL PARK

Waterways and rugged forest spread across 17,000 hectares, with unique Jarrah, Marri and Yarra trees, as well as expansive Orchid blooms. No fee to enter.

WELLNESS

Rise with the sun and fill your cup. Breakfast with sandy toes, and sea breezes that whisper as your hammock sways. Wander the forest, bathed in dappled light and dotted with fairy flowers. Drift weightless in an impossibly aquamarine lagoon. Sink into a hot tub and let your worries wash away. Snuggle by the fire with a glass of shiraz. The Milky Way so close, you could almost touch it. Yoga on the shore, where waves and tranquility wash over you.



SCAN TO LEARN MORE



♀ YOGA, MEELUP BEACH

NATURE

Step into the South West and let the landscape embrace you. Towering forests, sparkling waterways, and rolling hills invite quiet reflection and gentle movement. Here, every breath, every step, and every glance, reconnects you to the world around you.

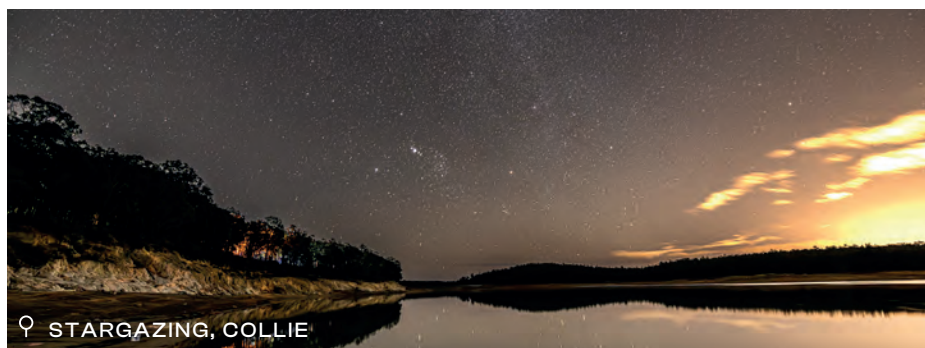
Forest Bathing

Wander beneath ancient trees where sunlight filters softly through leaves. The air carries the scent of damp earth and Eucalyptus, while moss-covered stones and hidden creeks offer places to pause, sit, and simply be. Each moment in the forest quiets the mind, restores energy, and allows the rhythm of nature to shape your day.

- Boranup Forest, Margaret River Region
- Donnelly State Forest, Pemberton
- Mindful in Nature (guided forest bathing), various locations
- Tuart Forest, Capel
- Wellington National Park, Collie

Astrophotography & Stargazing

Step away from the hum of modern life



♀ STARGAZING, COLLIE

and lose yourself beneath the night sky. With minimal light pollution, stars and constellations stretch endlessly overhead. On rare nights, the Southern Lights (Aurora Australis) paint the horizon in neon pinks and greens, a moving spectacle that invites awe, stillness, and deep contemplation.

- Castle Rock, Eagle Bay
- Fitzgerald River National Park, Bremer Bay
- Lake Ewlyamartup, Katanning
- Quinninup
- Sugarloaf Rock, Yallingup
- Wellington Dam, Collie
- Windy Harbour

Hiking & Mindful Walking

Explore trails that awaken your senses. Feel leaves crunch beneath your feet, hear birds warbling melodies above, and let the gentle sway of branches guide your breathing. Coastal paths, forested peaks, and winding tracks provide both challenge and calm, allowing moments of reflection and quiet exhilaration.

- Bald Head Walk Trail, Albany
- Bibbulmun Track, various locations
- Bluff Knoll, Stirling Range National Park
- Cape to Cape Track, Margaret River Region
- Monkey Rock, Denmark

SPAS, SAUNAS & RETREATS

Envelop yourself in spaces designed for restoration. Luxurious treatments draw on aromatherapy, massages, and reflexology, while wood-fired saunas, ice baths, and guided therapies awaken the senses and restore vitality. Technology-free retreats offer quiet rooms, meditation spaces, and wellness programs that support deep rest and mental clarity. Every detail, from the gentle lighting to the natural surrounds, is crafted to soothe and replenish.

- Chimes Spa Retreat, Denmark
- Losari Spa Retreat, Margaret River Region
- Quiet Retreats, various locations
- Vie Day Spa, Pullman Bunker Bay, Dunsborough
- Yala Yallingup Retreat & Spa, Yallingup

YOGA & MEDITATION

Practice mindfulness where calm is second nature. Let the sound of waves guide your breath at Meelup Beach, or the gentle flow of water along Honeymoon Pool inspire inner stillness. Stretch among the towering Karri trees of Boranup Forest while

listening to the natural symphony around you, or take part in sound healing and meditation sessions designed to restore balance and harmony. These spaces encourage presence, grounded energy, and a profound connection with nature, refreshing body, mind, and spirit.

ABORIGINAL & CULTURAL EXPERIENCES

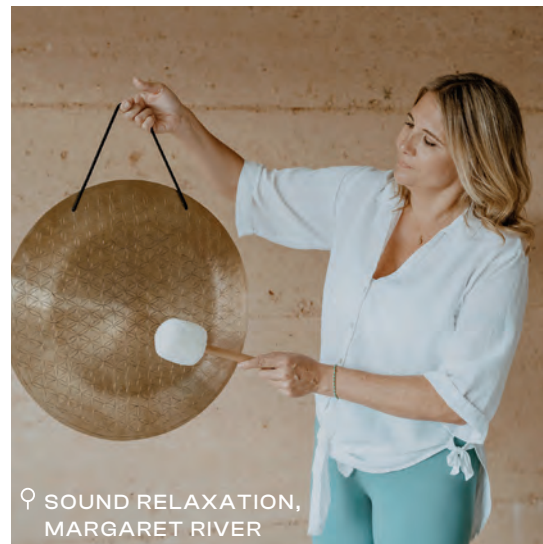
Experience Country through Aboriginal-led journeys that inspire reflection and connection.

Bush Tucker & Medicine Workshops with Boola Bidi Dreaming

Discover the traditional wellness practices of the Noongar people, who have thrived for over 50,000 years using medicinal plants, clay, and steam baths. This workshop explores commonly used trees, plants, herbs, and proteins that treat ailments and support a healthy lifestyle, offering insight into natural remedies and the foods that sustained Noongar communities for generations.

Twilight Didgeridoo Cave Tour with Koomal Dreaming

Begin with a guided walk through native bush, absorbing the textures, scents, and quiet movements of local flora and fauna. Descend into Ngilgi Cave after hours to hear the deep, haunting resonance of the didgeridoo echo through stone chambers. This intimate experience allows a profound connection to the land, its stories, and people, leaving a lasting sense of calm and renewal.



♀ SOUND RELAXATION,
MARGARET RIVER

SEASONAL WELLNESS

Bunbury Geographe

Whether it's nourishing your tired body with a private session of yoga or embarking on a journey of discovery for mind and soul on an Aboriginal cultural tour, the Bunbury Geographe region is a place where tranquil beauty meets rejuvenation.

Perfect for: A quiet weekend away

Best time of year: Summer, Autumn, Spring

Spend your time: In nature doing yoga, unwinding at a spa retreat, and indulging in fresh food.

Margaret River Region

Imagine sitting in your outdoor spa, the taste of bubbles on your lips, the salty air mingling with the scent of Eucalyptus, while vines abundant in sumptuous grapes ribbon the valley beyond.

In the Margaret River Region, luxury isn't just a thread count, it's a seamless flow

between premium accommodation and natural beauty at your doorstep.

Perfect for: Treating yourself to relaxation and luxury

Best time of year: Autumn, Winter, Spring

Spend your time: Rejuvenating with a massage, forest bathing, and dozing by a crackling fire.

Southern Forests & Valleys

Imagine unwinding beneath towering Karri trees, soaking in forest-filled sunlight, or indulging in spa treatments surrounded by serene wilderness.

Whether you're craving a peaceful escape or a rejuvenating adventure, the Southern Forests and Valleys are your perfect retreat.

Perfect for: Disconnecting from the world

Best time of year: Autumn and Winter

Spend your time: Cold bathing in inland pools, indulging in gourmet fresh produce, and stargazing.

Great Southern

Whispers of untamed beauty abound.

The Great Southern is a place where the raw power of the Southern Ocean crashes against ancient landscapes, and all around there is nothing but the quiet serenity of... space.

Reconnect with yourself in early morning natural coastal ice baths, gentle hikes through mist-shrouded forests, and relaxing spa treatments.

Perfect for: Immersing and exploring in wild nature

Best time of year: Summer and Spring

Spend your time: Wandering the trails, watching coastal sunsets, and waking in cosy cabins.

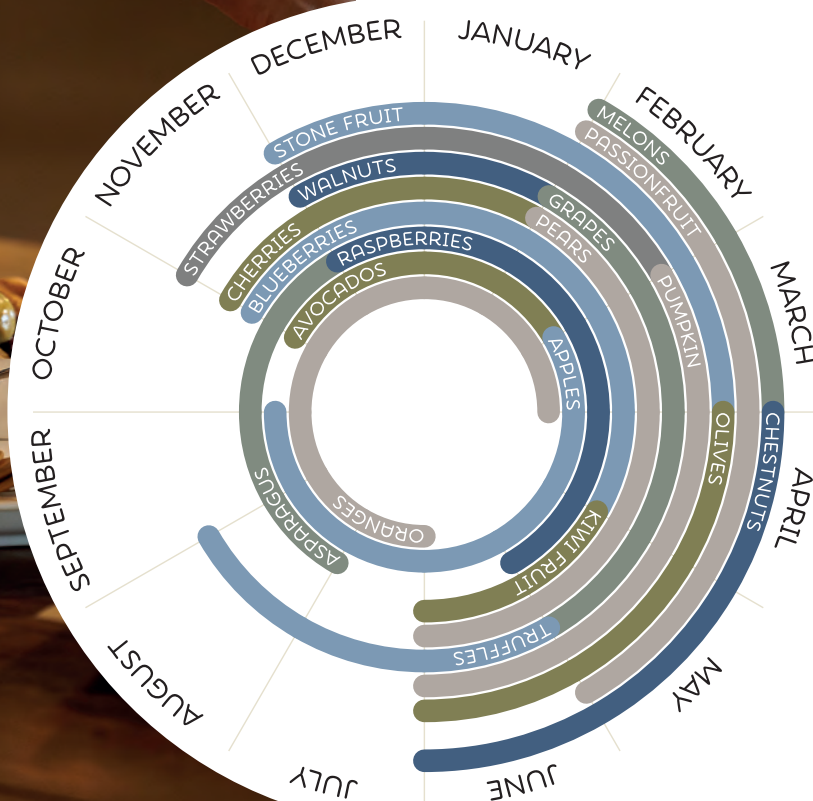
Feeling inspired? Discover wellness-focused itineraries for every corner of the South West in our Wellness Guide:
australiassouthwest.com/wellness

WINE, FOOD AND PRODUCE

Australia's South West is home to some of the world's most exquisite flavours, ready to delight every palate. Unearth aromatic truffles, sample sweet grapes transformed into award-winning wines, and savour paddock-to-plate meals crafted from the freshest local produce. From crisp apples and juicy cherries to creamy artisanal cheeses, every bite celebrates the richness of the land. Taste the ocean in freshly caught seafood, rich with flavour, or discover the artistry of chefs who champion local ingredients with creativity and flair. Pair these treasures with a crisp craft beer, a perfectly distilled gin, or a sparkling cuvée, each brewed or blended right here. Every sip and bite tell the story of a region abundant in taste.



♀ CHERRIES, MANJIMUP



SCAN TO LEARN MORE

♀ WEST CAPE HOWE WINES,
MOUNT BARKER

PRODUCE

From succulent beef and pork to tender chicken and lamb, all raised on the South West’s lush pastures, the region offers a bounty of delicacies. Locally grown produce forms the heart of every dish, with chefs amplifying it with tastes from around the world - think classic Australian-style steaks or pork, with sticky Asian-inspired flavours, paired with fresh seasonal vegetables. Whether dining at a restaurant or enjoying a family picnic, every bite celebrates the South West.

SEAFOOD

With the ocean at our doorstep, the South West is a seafood lover’s paradise. Savour freshly caught rock lobster or crayfish, shucked oysters, and native fish from pristine waters, or head inland for freshwater delights like marron, trout, and perch. Nothing beats a classic fish and chips by the beach, and locally sourced seafood features on most restaurant menus across the region.

ORGANIC

Delight in fresh, locally grown fruits, vegetables, dairy, meats, and beverages, nurtured using sustainable and organic practices. Support local producers while enjoying the vibrant flavours of free-range produce. From bustling farmers markets



♀ INARA, BUSSELTON

to specialty stores, and wining and dining experiences, there are organic options at every turn.

FARMERS MARKETS

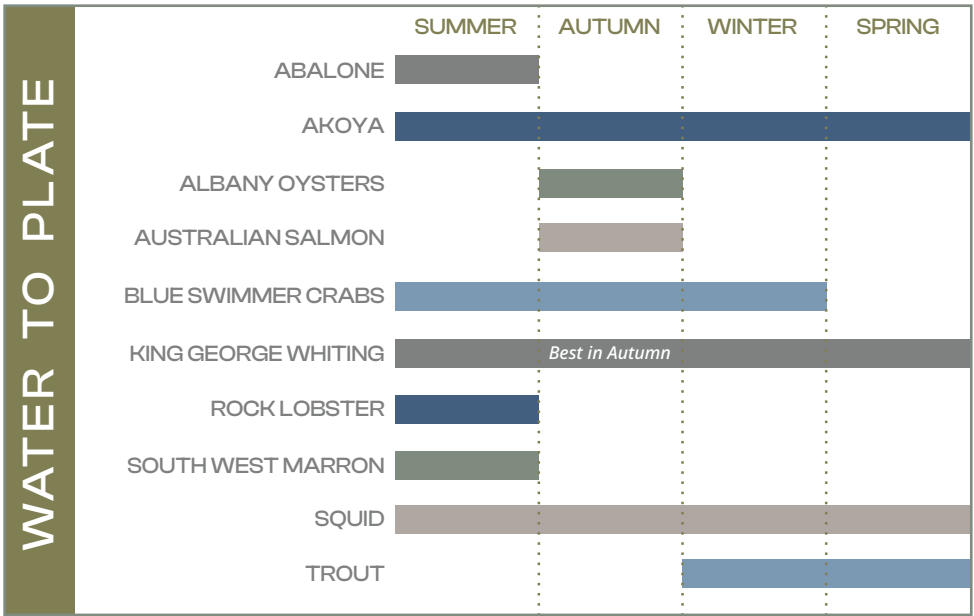
Stroll through rows of fresh fruit and vegetables and meet the growers who bring each harvest to life. Across the South West, farmers markets brim with seasonal produce, offering the freshest tastes and a warm connection to local life.

- Albany Farmers Market
- Boyanup Farmers Market


- Bridgetown River Markets
- Bunbury Farmers Market
- Busselton Foreshore Markets
- Collie Goods Shed Markets
- Donnybrook Station Markets
- Eaton Farmers Market
- Katanning Farmers Market
- Margaret River Farmers Market
- Nannup Markets
- Origins Market Busselton
- Vasse Village by Bunbury Farmers Market
- Western Growers Fresh, Busselton



♀ CHESTNUTS, NANNUP



Be sure to check local guides, licences and fishing restrictions. Some recreational fishing locations and open season dates are specific and fishing outside of these dates is prohibited. Some of the above are farmed only.



BARRELS, BREWS, AND BOTTLES

♀ VINEYARD, YALLINGUP

WINERIES

Ready to embark on a wine adventure guaranteed to make your tastebuds dance? Western Australia boasts nine wine regions, with six of them here in the South West. The Mediterranean climate, rolling vineyards, sun-drenched slopes, and cool breezes shape distinctive varietals. Sip award-winning wines and savour the flavours that capture the spirit of the land.

Geographe

Starting in the north at Harvey, winding south through Capel to Busselton, then east to Donnybrook and Ferguson Valley, the Geographe Wine Region is home to more than 50 growers, 25 producers, and 25 different grape varieties. It is the most diverse wine region in Western Australia, a patchwork of microclimates that foster distinctive varietals such as Tempranillo and Nebbiolo.

Margaret River

Ancient soils, rich biodiversity, and cool sea breezes shape this internationally acclaimed wine region. Discover award-winning varieties including Cabernet Sauvignon, Chardonnay, Shiraz, and SSB blends, spread across nearly 100 cellar doors, each offering a true taste of the region.

Blackwood Valley

The Blackwood Valley, one of Australia's newest wine regions, enchants with rolling pastures, towering trees, and serene, winding rivers. Nestled in the heart of the South West, it forms one of the most scenic wine trails, offering boutique wines from crisp Chardonnays to rich Shiraz.

Manjimup

Manjimup enjoys a Bordeaux-style climate, with cold winters and dry summers ideal for grape growing. Its red, gravelly soils produce rich, flavoursome wines, with Cabernet Sauvignon, Merlot, and Verdelho earning the region a reputation for quality boutique vintages.

Pemberton

Pemberton's cool, temperate climate and fertile soils nurture vines that produce wines with concentrated flavours and complex profiles. A rising star for cool-climate varieties, the region is home to a selection of exceptional wines that showcase its unique terroir.

Great Southern

The Great Southern is Australia's largest wine region, stretching from Frankland River to Albany. Its Mediterranean-influenced climate and diverse landscapes create ideal conditions for cool and warm-climate varieties, producing award-winning wines from Shiraz and Riesling, to Pinot Noir and Sauvignon Blanc.

BREWERIES & CIDERIES

There's nothing like cracking a cold can as you overlook the ocean or enjoying a fresh pour among rolling hills. In the South West, every craft beer and cider is made with passion you can taste in every sip. From rustic, family-friendly venues to sleek, modern breweries and cideries, each offers a unique flavour and atmosphere worth exploring.

- 8 Waves Brewing Co, Yallingup
- Beerfarm, Metricup
- Boston Brewing Co, Denmark
- Eagle Bay Brewing Co, Dunsborough
- Shelter Brewing Co, Busselton
- Southcamp, Dunsborough
- The Cidery and Blackwood Valley Brewing Company, Bridgetown
- Wild Hop Brewing Company, Yallingup

DISTILLERIES

In Australia's South West, award-winning spirits from bourbon to vodka set the scene. Settle in with a warming whisky by the fire or linger over a botanical gin. Savour slowly or as the perfect aperitif before your next feast, each glass reflecting the finest elements of the region.

- Beyond Distilling, Busselton
- Great Southern Distilling Co, Albany
- Margaret River Distilling Co, Margaret River
- The Dam at Raintree, Denmark
- Wild Lot Distillery, Karriale
- Wise Distillery, Margaret River



♀ PICNIC, BRIDGETOWN

FOODIES ROAD TRIP



♀ TRUFFLE HUNT, MANJIMUP

Day 1: Perth to Great Southern

Leave the city behind and let the open road carry you south into the rolling hills and tranquil farmland of the Great Southern. Pause in Frankland River to sip a crisp Chardonnay or nibble on artisan cheeses, letting the vineyards ease you into the rhythm of the region. Meander through Mount Barker and the Porongurup Ranges, where boutique wineries and granite peaks rise dramatically above lush vines. Spend the night at a cosy B&B in the hills or continue south to Albany, and end the day with a seafood dinner as the sun paints the ocean in gold and rose hues.

Day 2: Great Southern

Wake to the gentle hush of the Southern Ocean and explore Albany's dramatic coastline. Discover the city's rich heritage at the National ANZAC Centre or wander colonial streets. Pause for brunch at a beachfront café, watching waves roll in as you savour smoked fish on sourdough. If it's the weekend, explore the Albany Farmers Market for local delights - or better yet, plan your trip around the Taste Great Southern food and wine festival to sample the amazing flavours of the region, including Albany's famous fresh rock oysters. Finish the day with a picnic on a quiet beach or a stroll along the rugged headlands, breathing in wild, salty air.

Day 3: Great Southern to Southern Forests & Valleys

Take your time travelling from Albany to Denmark, exploring the scenic Scotsdale and Mount Shadforth drives. Stop at

boutique wineries to sample local wines and discover artisan produce, from gourmet condiments and cheeses to toffee, honey, and chocolate. Pause for a leisurely lunch and enjoy a pint at a local brewery before continuing inland. Overnight in the Southern Forests and Valleys, surrounded by Karri trees and the hush of the forest.

Day 4: Southern Forests & Valleys to Margaret River Region

Wake in the Southern Forests and Valleys, where rolling farmland meets towering trees. Spend time exploring the walking trails or try fishing on the Warren River. Sample local marron, enjoy a glass of regional wine, or hunt for black Périgord truffles with expert truffle dogs in Manjimup (winter only). Along the way, visit Pemberton's farm gates to taste fresh cherries, avocados, and other seasonal produce. At any time of year, you can savour truffle-infused dishes at boutique trufferies. By late afternoon, continue east to the Margaret River Region, ready to wake up to even more flavours and adventures tomorrow.

Day 5: Margaret River Region

Rise in the acclaimed Margaret River wine region, where vineyards stretch to the horizon. Spend the day tasting exceptional wines at the nearly 100 cellar doors, or, if you're not a wine aficionado, discover the region's breweries and distilleries. Stop along the way to sample local cheeses, chocolates, ice cream, nougat, berries, and more. Explore Caves Road, and take in famed chocolate factories and stunning

show caves for a touch of underground adventure. Time your visit to coincide with Pair'd Festival or Cabin Fever for an extra dose of regional culture. Finish the day with a seafood feast by the ocean - abalone or fresh crayfish - paired with local wine and the soothing rhythm of the waves.

Day 6: Margaret River Region to Perth via Bunbury Geopraphe

On your final day, take the scenic backroads through Donnybrook and Balingup, where orchards and farms burst with seasonal produce. Stop at charming farm gates to taste fresh local treats or pick up a quick snack. Pause in Ferguson Valley to enjoy rolling vineyards, boutique breweries, and hilltop views before returning to Perth. Carry the sights, scents, and flavours of the South West home with you, already dreaming of your next escape.



♀ SINGLEFILE WINES, DENMARK



ACCOMMODATION

CARAVAN PARKS & CAMPING

Wake with the sun and the soft songs of birds as you sit outside your caravan. Or watch the sunset slip beneath the horizon from your campsite while you toast marshmallows over a roaring winter fire. The parks are plentiful in the South West, many offering creature comforts like hot showers, picnic shelters, and kid-friendly facilities - all surrounded by nature.

For a full list of locations and bookings, visit caravanwa.com.au and search the South West region. Be sure to research, book early, and leave each site as pristine as you found it.

REST STOPS & FREE CAMPING

Travelling the South West by vehicle? Begin your day with sunrise and a coffee by the beach or wander misty forests with leaves crunching beneath your feet. Whether caravanning, in an RV, or a converted tiny-home bus, the region offers welcoming spots to pause and rest between traditional accommodation sites.

Most free-camping and overnight rest areas allow stays of 24 to 72 hours - please respect the limits and care for the land. Be sure to check restrictions and apply for permits online or at your nearest visitor centre before you arrive.

Bunbury Geographe

- Brunswick Recreation Ground
- Brunswick's Self-Contained RV Short Stay Rest Area

- Bunbury Self-Contained Rest Areas (Wyalup Rocky Point and Ocean Drive)
- Capel's Self-Contained Short Stay RV Stop
- Harvey's Self-Contained RV Short Stay Rest Area
- Yarloop's Self-Contained RV Short Stay Rest Area

Margaret River Region

Free camping is not permitted in the Shire of Margaret River.

Southern Forests & Valleys

- Bridgetown Self-Contained RV Stop
- Eulin Crossing Reserve, Boyup Brook
- Greenbushes Pool
- Karri Gully Picnic Site, Nannup
- Querijup Pool, Boyup Brook

Great Southern

- Betty's Beach, Albany
- East Bay, Albany
- Katanning's Self-Contained RV Stop
- Lake Nunijup, Cranbrook
- Norman Beach, Albany

FARM STAYS

Wake to the soft sounds of sheep and cows, grazing across the paddocks. Golden light spilling over the fields, carrying the earthy scent of the land. Farm stays in the South West invite you to slow down, reconnect, and embrace life at nature's pace.

Burnside Organic Farm, Margaret River

Meet friendly animals, savour organic wines, and relax among native bushland.

Chestnut Brae, Nannup

Wander orchards, taste chestnuts (March to June), catch fresh marron, or join a farm tour.

Diamond Forest Farm Stay, Pemberton

A 50-acre dog-friendly farm, with canoeing, forest adventures, and more than 100 friendly animals.

Donnelly River Village, Donnelly River

Cosy chalet cottages with leafy trails and plentiful kangaroos, emus, and possums.

Eight Willows Retreat, Metricup

Stroll through fruit orchards, meet the chickens, hand-feed sheep, or bush-walk.

Loose Goose Chalets, Nannup

Self-contained chalets with access to Jarrah forest and the old timberline trail.

Margaret River Holiday Cottages, Margaret River

Cuddle or feed hand-reared animals, walk nature trails, and relax among the Peppermint trees.

Pump Hill Farm Cottages, Pemberton

Rustic, self-contained cottages perfect for a digital detox. Feed cows, meet alpacas and pigs, go on hay rides, and experience yoga and spa treatments.

RAC Karri Valley Resort, Lake Beedelup

Feed the friendly farm animals, scatter seed for kookaburras and parrots, enjoy mini golf, or glide across the lake in a kayak.

Sanctuary South Stays:

Nornalup Homestead, Nornalup (STRA6333X6G852NK)

On 68 hectares of forest and farmland, wander with sheep as your shadow, watch the sunrise from the veranda, or stargaze at night.

GLAMPING

Where the beauty of the outdoors meets indulgent comfort. Drift off in soft beds and cosy linens, dine beneath festoon lights strung across the night sky, or soak in an outdoor bath with a glass of bubbles in hand. Tucked beside olive groves or beneath endless stars, it's an escape filled with wonder, comfort, and lasting memories.

Lake Brockman Tourist Park, Harvey

Not your usual campground, Lake Brockman offers glamping tents overlooking the sparkling Logue Brook Dam. Start your day with a refreshing dip, and relax on your deck as the possums come out to play at dusk.

Mandalay Holiday Resort, Busselton

Just steps from Geographe Bay, Mandalay Resort's Lotus Belle tent offers a touch of

glamour in nature. Perfect for couples or families of four, sink into the king bed or convertible lounge, enjoy a cosy fireplace, air conditioning, and coffee as you unwind amid peaceful surrounds.

Olio Bello Lakeside Glamping, Cowaramup

From the moment you arrive, time slows. Each eco-safari bungalow invites you to switch off and soak in the serenity of the surrounding olive groves. Enjoy views over the shimmering lake, savour fresh flavours at the onsite café, and discover the estate's premium olive oils.

RAC Margaret River Nature Park, Margaret River

Sleep under the trees in a modern safari tent, where up to six guests can unwind amid forest surrounds. Relax on your private deck, enjoy cosy comforts, and step out to explore trails, fire pits, playgrounds, and shared amenities, for a magical nature escape.

Walk Talk Taste Luxe Farm Stay, Margaret River

A gourmet holiday in the heart of wine country, offering the best of the bush and luxury at its finest. With just one secluded tent, enjoy complete privacy as you savour premium artisan produce, sip exquisite local wines, and immerse yourself in the tranquillity of the surrounding landscape.

Willow Wood Glamping Retreat, Ambergate

Just 15 minutes from Busselton, Willow Wood offers a peaceful escape from

everyday life. Stay in cosy two or four-person tents with ensuites, and step outside to immerse yourself in nature's calm, with forest trails, highland cows, and fresh air at your doorstep.

LUXURY STAYS

Picture resorts with spas, boutique chalets tucked deep in the forests, or holiday homes with endless ocean views. Relax by a crackling fire, sip a local wine on your terrace, or simply let the serene surroundings restore your mind and body. Whether escaping solo, with friends, or alongside family, discover the true meaning of indulgence. These 5-star stays are as unforgettable as the stars above.

With so many options, head to australiassouthwest.com/listings to find your perfect luxury stay.

UNIQUE STAYS

Ever imagined drifting off in a restored 1944 Dakota airplane, staying in a house built from hemp, floating the night away on a houseboat, or escaping to an off-grid tiny cabin? Across the South West, unique and quirky stays invite you to experience something truly different, each with its own story to tell.

Houseboat Holidays, Walpole

Be gently rocked to sleep along the waterways of Walpole. These houseboats sleep up to 9 people.



♀ WINDOWS ESTATE, YALLINGUP

Indica Hemp House, Wilyabrup (STRA62808YVIENB8)

A luxury home crafted from 'hempcrete' walls. It features a hydrotherapy spa and has sustainability at its core.

Premier Mill Hotel, Katanning

Once a flour mill, now a boutique hotel. Blending heritage with modern comforts, it is a one-of-a-kind stay.

Sanctuary South Stays: Sanctuary Train, Nornalup (STRA6333QRQILRJN)

A one-bedroom tiny house inspired by the Denmark-Nornalup railway. It even features curved ceilings to mirror old railcars.

The Lily Stirling Range, Amelup

Self-contained cottages nestled beside a 16th-century working windmill. Or stay in the renovated Dakota airplane for an unforgettable escape.

Tiny Cabins Throughout the Region

Discover hideaways from Heyscape and The Floating Forest to Tree Chalets, Little House Republic, Hidden Cabins, 8 Paddocks, The Cove, and the Sleeping Lady.

For more unique stays, check out the accommodation listings on our website at australiassouthwest.com/listings



♀ THE LILY STIRLING RANGE, AMELUP

PET FRIENDLY

Dreaming of a getaway where your pawsome sidekick comes too? In Australia's South West, adventures are best shared with wagging tails and sandy paws. Picture sunset strolls along shores dotted with dogs, lazy lunches with plenty of treats, or forest wanderings with ears pricked to the sounds of the wild. Just remember, some places — especially national parks — are special havens for native wildlife, so check ahead for restrictions and seek out local visitor centres for alternative options.



ACCOMMODATION

Tired feet (and paws) need somewhere to pause, pant, rest, and recharge. Set the water bowls up, hog the pillows, and sit back for a night under a twinkling tapestry of stars at these campsites and captivating holiday homes.

Bunbury Geographe

- Discovery Parks Bunbury Foreshore, Bunbury
- Glen Mervyn Dam, Collie
- Lake Brockman Tourist Park, Harvey
- Lake Kepwari, Collie
- Peppy Beach Retreats, Capel
- Stockton Lake, Collie

Margaret River Region

- Bayview Geographe Resort, Busselton
- Big 4 Breeze Holiday Parks, Busselton
- Big 4 Southern Stars Holiday Park, Dunsborough
- Cape Executive Holiday Properties, Margaret River Region (Select places)
- Heyscape, Yallingup ('Daniel' cabin)
- In House Holidays, Margaret River Region (Select places)
- Mandalay Holiday Resort, Busselton (Caravan and camping sites)
- Private Properties, Margaret River Region (Select places)
- RAC Busselton Holiday Park, Busselton (Caravan and camping sites)
- Summerstar Busselton Lazy Days Park, Busselton (Caravan and camping sites)
- Summerstar Margaret River Tourist Park, Margaret River (Caravan and camping sites)
- Summerstar Riverview Tourist Park, Margaret River (Caravan and camping sites)
- Tasman Holiday Parks Yallingup Beach, Yallingup (Select places)
- Tasman Holiday Parks Yallingup Caves, Yallingup (Select places)

Southern Forests & Valleys

- Big 4 Bridgetown, Bridgetown
- Big Brook Arboretum, Pemberton
- Diamond Forest Farm Stay, Pemberton
- Greenbushes Pool, Greenbushes
- Northcliffe Holiday Park, Northcliffe
- Little House Republic, Scott River East
- Loose Goose Chalets, Nannup
- Sues Bridge, Blackwood River National Park
- Summerstar Rest Point Caravan Park, Walpole (Caravan and camping sites)

Great Southern

- Acclaim Rose Gardens Beachside Holiday Park, Albany (Caravan and camping sites)
- Big4 Emu Beach Holiday Park, Albany (Caravan and camping sites)
- Big 4 Middleton Beach Holiday Park, Albany
- Bremer Bay Beaches Caravan Park, Bremer Bay (Caravan and camping sites)
- Emu Beach Chalets, Albany
- Denmark Scenic Tourist Park, Denmark (Powered ensuite sites)
- Heyscape, Denmark ('Salt' cabin)
- Native Dog Cabin, Bremer Bay (STRA633881B8UZ5))
- Peaceful Bay Caravan Park, Peaceful Bay
- Samphire Collection, Albany ('The Cottage')
- Tasman Holiday Parks Albany, Albany (Select places)
- The View, Albany (STRA63300JL6BWYS)

ADVENTURES

From easy Sunday strolls to forests bursting with sights and smells (and LOTS of trees to pee on), adventuring pooches are bound to enjoy these South West escapades.

Bunbury Geographe

- Gnomesville, Ferguson Valley
- Golden Valley Tree Park, Balingup

Margaret River Region

- Wadandi track, Margaret River Region
- Studio Gallery and Bistro, Yallingup
- Yallingup Maze, Yallingup

Southern Forests & Valleys

- Glenoran Pool, Nannup (on lead)
- Manjimup Heritage Park, Manjimup (on lead)



♀ RAC BUSSELTON HOLIDAY PARK

- Big Brook Dam, Pemberton
- Pemberton Pool, Pemberton
- Pemberton Tramway, Pemberton

Great Southern

- Harewood Forest Walk, Denmark
- Albany Heritage Park (excluding the National ANZAC Centre), Albany
- Uredale Point Heritage Trail, Albany

BEACHES

Saltwater on the nose and sand in your fur – that's a dreamy day in the South West for a dog. Here are some places you can throw a frisbee or just watch the sun set over the coast together.

Bunbury Geographe

- Back Beach, Bunbury
- Binningup Beach, Harvey Region
- Dalyellup Beach, Bunbury
- Peppermint Grove Beach, Capel
- Stratham Beach, Capel

Margaret River Region

- Bunker Bay, Cape Naturaliste
- Dunsborough Foreshore, Dunsborough
- Flinders Bay, Augusta
- Gnarabup Dog Beach, Margaret River

Southern Forests & Valleys

- Windy Harbour Beach, Windy Harbour (east of the boatramp)

Great Southern

- Frenchman Bay Beach, Albany
- Lights Beach, Denmark
- Middleton Beach, Denmark
- Parry Beach, Denmark
- Prawn Rock Channel Dog Beach, Denmark
- Whakers Cove/Fisheries Beach, Albany

Check with local visitor centres for restrictions on which areas dogs are allowed off-leash.

CAFES, WINERIES, & BREWERIES

Delicious puppacinos and a tasty bite – hardly the ruff life. Yes, sometimes you have to live the alfresco life as a dog owner, but these options will certainly have you enjoying the view.

Bunbury Geographe

- Dolphin Discovery Centre, Bunbury
- Stirling Cottage Kitchen, Harvey

Margaret River Region

- Beerfarm, Metricup
- Cape Mentelle, Margaret River
- Caves House Hotel, Yallingup
- Clairault Streicker Wines, Wilyabrup
- Fishbone Wines, Wilyabrup
- Passel Estate, Cowaramup
- Rivendell Winery, Yallingup
- Shelter Brewing Co, Busselton
- Swings and roundabouts, Yallingup
- White Elephant Café, Gnarabup
- Wild Hop Brewery, Yallingup
- Woody Nook Wines, Wilyabrup

Southern Forests & Valleys

- The Cidery, Bridgetown
- Southern Forests Chocolate Company, Pemberton
- Tall Timbers, Manjimup

Great Southern

- Black Cockatoo Cafe, Kojonup
- The Dam, Denmark
- Earl of Spencer Historic Inn, Albany
- Kate's Place, Albany
- The Lake House Denmark, Denmark
- Peaceful Bay Cafe, Peaceful Bay



♀ BIG 4 DUNSBOROUGH

ACCESSIBILITY AND INCLUSIVITY

♀ REGIONAL WILDFLOWER GARDEN, ALBANY

The region is on a continual mission to educate and improve experiences to ensure travel is accessible for everyone.

This can include people in wheelchairs, people who need to travel with support, those who have learning challenges, members of the LGBTQIA+ community, or individuals with vision or hearing loss.

Our website, australiassouthwest.com, includes an accessibility widget to better serve people with a disability, including options for colour blindness, visual impairment, motor skill disorders, ADHD, epilepsy, dyslexia, and more.

Accessible Accommodation:

- Abbey Beach Resort, Busselton
- Acclaim Rose Gardens Beachside Holiday Park, Albany
- Amalfi Resort Busselton, Busselton
- Albany Holiday Units, Albany
- The Beach House at Bayside, Albany
- Big 4 Emu Beach Holiday Park, Albany
- Big 4 Middleton Beach Holiday Park, Albany
- Bremer Bay Beaches Resort Tourist Park, Bremer Bay
- Broadwater Resort, Busselton
- Bunbury Apartment Motel, Bunbury
- Cape Lodge, Yallingup
- Caves House Hotel and Apartments, Yallingup
- Edge Luxury Villas, Cowaramup
- Eight Willows Retreat, Margaret River
- Harris River Estate, Collie
- Hilton Garden Inn Albany, Albany
- Hilton Garden Inn Busselton, Busselton
- The Lily Stirling Range, Gnowangerup
- Loose Goose Chalets & Shuttles, Nannup
- Mantra Bunbury Lighthouse, Bunbury
- Margaret Beach Resort, Margaret River
- Margarets In Town Apartments, Margaret River
- Margaret River B&B, Margaret River
- Nornalup Riverside Chalets, Nornalup
- Olio Bello, Cowaramup
- Peppy Beach Retreats, Capel
- Private Properties, Margaret River
- Pullman Bunker Bay Resort, Yallingup
- Pump Hill Farm Cottages, Pemberton
- RAC Busselton Holiday Park, Busselton
- RAC Karri Valley Resort, Pemberton
- Roelands Village, Dardanup
- Seashells Yallingup, Yallingup
- Smiths Beach Resort, Yallingup

- Summerstar Busselton Lazy Days Caravan Park, Busselton
- William Bay Cottages, Denmark
- Wine Tree Estate Chalets, Denmark
- Wyadup Brook Cottages, Cowaramup
- Yallingup Maze, Yallingup

Accessible Tours and Experiences:

- Albany's Historic Whaling Station
- Amaze'n Margaret River
- Bunbury Museum and Heritage Centre
- Busselton Jetty
- Dolphin Discovery Centre Bunbury
- Forest Explorers Tours
- The Gap and Natural Bridge
- Harvest Tours
- Honeymoon Pool
- Manjimup Heritage Park
- National ANZAC Centre
- Naturaliste Charters Tours
- Off The Beaten Track WA Tours
- Saltwater Busselton
- Understory Art and Nature Trail
- Valley of the Giants Tree Top Walk
- Whale Watch WA Tours
- Wow Wilderness Ecocruise
- Yallingup Maze

SUSTAINABILITY

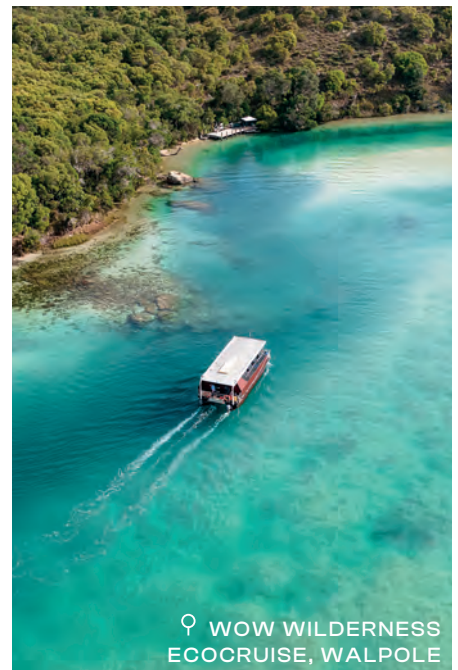
♀ WINE TREE ESTATE CHALETS, DENMARK

Green getaways aren't just about the colour of the forest around you - they're also about developing a deep understanding and support for the environment.

Sustainability is crucial to the region, to ensure that travel benefits the landscape and allows future generations to be able to enjoy this pristine landscape.

Eco-Friendly Businesses:

- 8Paddocks, Margaret River
- Adventure Connections, Collie
- Aerial Adventure Pemberton, Pemberton
- All Sea Charters, Margaret River Region
- Amaze'n Margaret River, Margaret River
- Busselton Jetty, Busselton
- Cape2Camp, Margaret River
- Chimes Spa Retreat, Denmark
- Dolphin Discovery Centre Bunbury, Bunbury
- Eco Adventures Margaret River, Margaret River
- Edge Luxury Villas, Cowaramup
- Edgewalkers, Walpole
- Forest Explorers, Collie
- Forest Rise Chalets and Lodge, Margaret River
- Heyscape Tiny Cabins, Yallingup and Denmark
- Highland View Farm, Donnybrook
- Indica Hemp House, Margaret River (STRA62808YVIENB8)
- Inspiration Outdoors, Albany
- Koomal Dreaming, Yallingup
- Lake Brockman Tourist Park
- Little House Republic, Scott River
- Losari Retreat, Margaret River
- Margaret River Adventure Co, Margaret River
- Margaret River Properties, Margaret River
- Mindful in Nature, Margaret River
- Native Dog Cabin, Bremer Bay (STRA633881B8UZ5J)
- Naturaliste Charters, Bremer Bay
- Northcliffe Holiday Park, Northcliffe
- Off The Beaten Track WA, Denmark
- Olio Bello Lakeside Glamping, Cowaramup
- Parry's Estate, Denmark
- Peaceful Bay Caravan Park, Peaceful Bay
- Premalaya, Yallingup
- Samphire Collection, Albany
- Sanctuary Train, Nornalup
- Southern Forests Experiences, Pemberton
- South West Eco Discoveries, Margaret River
- Tanah Merah, Margaret River
- Tree Chalets, Busselton
- Untamed Escape, Margaret River & Albany
- Whale Watch WA, Augusta
- Wine Tree Estate Chalets, Denmark
- Wow Wilderness Ecocruise, Walpole



♀ WOW WILDERNESS
ECOCRUISE, WALPOLE



PLAN YOUR TRIP

📍 MARGARET RIVER REGION

GETTING TO AUSTRALIA'S SOUTH WEST

Flights arrive into Western Australia from all Australian capital cities, with international arrivals available at perthairport.com.au. East coast visitors can also access Perth via rail.

Australia's South West is located just a few hours' drive south of the state's capital city, Perth (Boorloo), with both self-drive and tour options available. While cruises disembark at a variety of ports.

Busselton Margaret-River airport also welcomes direct flights from both Sydney and Melbourne into the region multiple times a week, and Albany Airport accommodates flights from within the state.

BE PREPARED

Consider arranging travel insurance for your trip to cover injury or illness, and check your policy for high-risk adventure activities.

When travelling off the beaten track, please be sure to notify park rangers and family members and consider taking an EPIRB with you.

BEFORE YOU ARRIVE

Grab a Park Pass

Visitor fees apply at some National Parks in Australia's South West. Park Passes can be bought online and are also available at a range of outlets including select visitor

centres. Some National Park camp sites can be pre-booked at parkstay.dbca.wa.gov.au/searchavailability/information. For more information visit exploreparks.dbca.wa.gov.au or contact Parks and Wildlife on +61 8 9219 9000.

Flying a Drone

Check the Department of Biodiversity, Conservation & Attractions website exploreparks.dbca.wa.gov.au/drones-parks, as well as the Civil Aviation Safety Authority website casa.gov.au/knowyourdrone/drone-rules for rules and regulations for piloting drones in Australia's South West.



♀ KANGAROOS, MARGARET RIVER REGION

WHEN YOU GET HERE

Road Safety

In Australia, cars travel on the left of the road and speed is in kilometres (km) per hour. When overtaking, make sure you have a clear view of oncoming traffic and use your indicator to signal your intentions to other drivers.

Watch Out For Wildlife

Be vigilant when driving country roads, particularly at dawn and dusk. It is not uncommon to encounter wildlife including kangaroos and emus, as well as stock such as cows and sheep wandering the road. Take note of any safety signage regarding interacting with wildlife.

Water Safety

Before entering any body of water in Australia's South West, familiarise yourself with the risks of the area and check signage for warnings of danger. If you are unsure of swimming conditions, ask for advice from local visitor centres or authorities. When possible, swim between the red and yellow flags - these mark the safest and most regularly supervised areas. Tread carefully when stepping on rocks as they may be slippery, and be aware of freak swells that may knock you off your feet.

Fire Safety

At some campgrounds, campfires are not permitted at any time. At others, they are permitted seasonally. Always be wary when lighting campfires and never leave a fire unattended. Restrictions can be imposed without notice at any time or place, so before lighting a campfire, make sure to always check for the most up to date information, as well as information on Bushfire Advice when travelling through the region at [emergency.wa.gov.au](https://www.emergency.wa.gov.au).

VISITOR SERVICING

  To get the most out of your Australia's South West holiday, speak to the experts at one of the many visitor centres or Community Resource Centres (CRCs) in the region, or if coming by way of Perth visit the WA Visitor Centre at Shop 1/378 Wellington Street, Perth Train Station. The friendly staff can offer advice on accommodation, tours, services, and the best things to see and do in the region. Look for the blue and yellow italic or white and blue 'i' signs to find a visitor centre on your holiday route.

IMPORTANT CONTACTS

Emergency services (police, ambulance, fire brigade): 000 or 112 (mobile)

Roadside assistance (RAC): 13 11 11

Road conditions (Main Roads): 13 81 38
[mainroads.wa.gov.au](https://www.mainroads.wa.gov.au)



♀ CAMPFIRE, COLLIE



♀ BREMER BAY

START DREAMING



SCAN TO LEARN MORE



1. @willowrooadventures



2. @discovermargaretriver



3. @jontephotos

ADVENTURE

1. Snorkelling, Canal Rocks
2. Canoeing, Margaret River
3. Surfers Point, Margaret River

Leave only footprints, take only memories — and in Australia's South West, we've got some incredible ones waiting.

Brag-worthy shots of crystal coastlines or enchanting dappled forests abound. Snap a frolicking whale in the surf or selfie with the glorious wildflowers.

Tag @australias_southwest or use the hashtag #AustraliasSouthWest and you just might feature here in the future!



1. @passelestate

WINE, FOOD & PRODUCE

1. Wine & Cheese, Passel Estate
2. Fish Tacos, Pullman Bunker Bay
3. The Colour Patch, Augusta



2. @pullmanbunkerbay



3. @shelbythekelpie



1. @symeskay



2. @antingsworld



3. @suddenimpactimages

WELLNESS

1. Hidden Cabins, Ferguson Valley
2. Forest Bathing, Boranup Forest
3. Stargazing, Quinninup



1. @whalewatchwesternaustralia



2. @the.foodieexplorers



3. @joaquinrobredo_

NATURE & WILDLIFE

1. Whale, Augusta
2. Stingray, Hamelin Bay
3. Kangaroo, Cape to Cape Track



1. @lostandfoundfestival



2. @jennyfeastphotography



3. @cjmaddock

EVENTS

1. Lost and Found Festival
2. Taste Great Southern
3. Bloom Festival



1. @coastingoutback



2. @ourphotostories



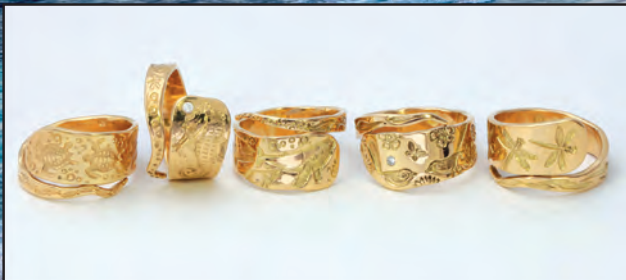
3. @baseimagery

CULTURE & HERITAGE

1. Wadandi Boodja, Koombana Bay Foreshore
2. Welcome To Country, Taste Great Southern
3. Albany's Historic Whaling Station, Albany

John Miller Design

Yallingup and Margaret River



Australian manufacturing at its finest

Monday-Saturday 10am-4pm
or by appointment 0419 852 873

johnmillerdesign.com

